



## Power cable accessories catalogue

### **MV Terminations & MV Joints**

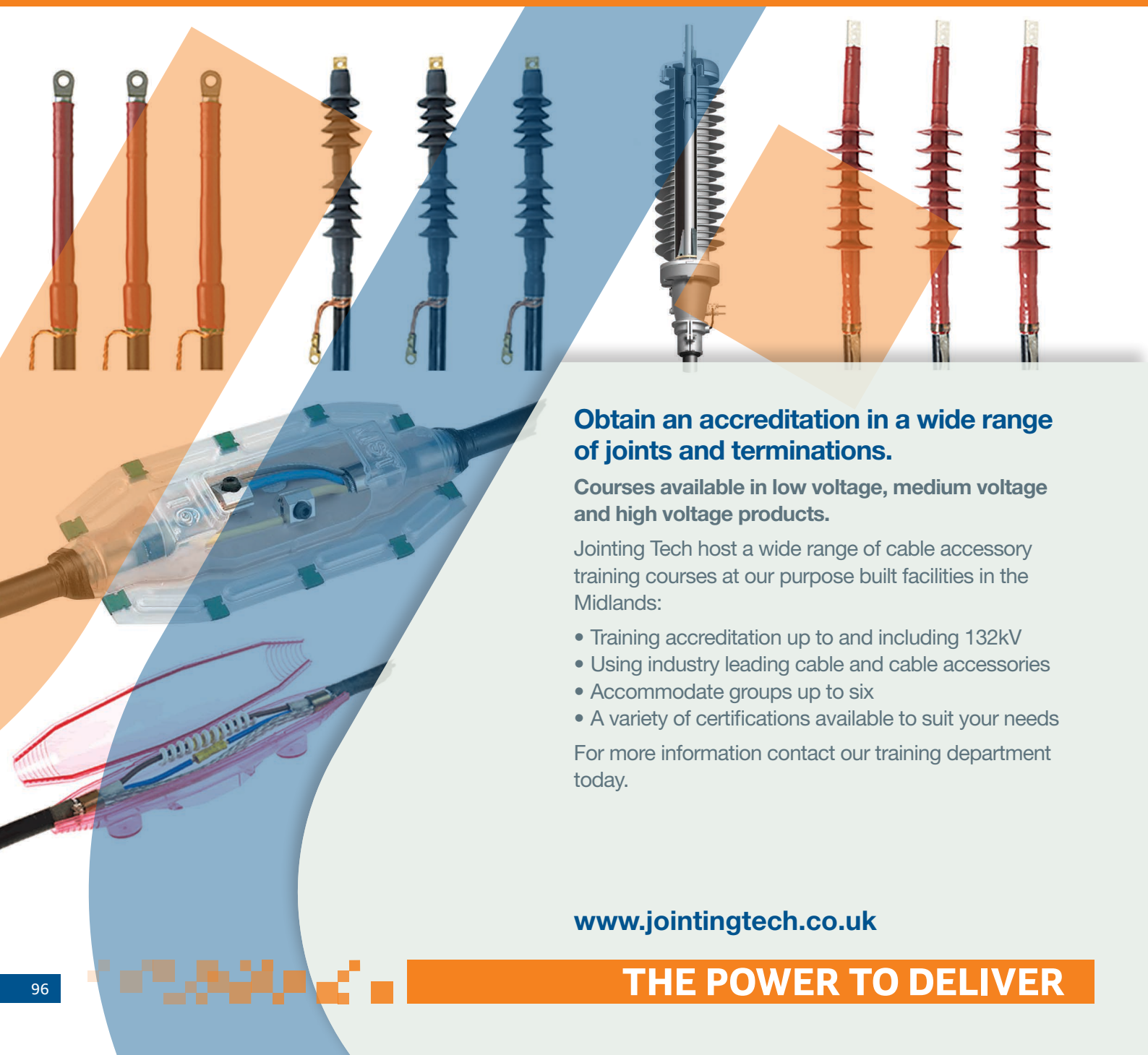


**Jointing Tech**



**THE POWER TO DELIVER**

## Excellence in Training



### **Obtain an accreditation in a wide range of joints and terminations.**

**Courses available in low voltage, medium voltage and high voltage products.**

Jointing Tech host a wide range of cable accessory training courses at our purpose built facilities in the Midlands:

- Training accreditation up to and including 132kV
- Using industry leading cable and cable accessories
- Accommodate groups up to six
- A variety of certifications available to suit your needs

For more information contact our training department today.

[www.jointingtech.co.uk](http://www.jointingtech.co.uk)

# MV Terminations

## Contents

**PFISTERER**  
THE POWER CONNECTION

**TE**  
connectivity

**3M**

11kV Indoor Termination	<b>98</b>	Interface Bushings A to E	<b>116</b>
11kV Outdoor Terminations	<b>100</b>	Separable Connectors for A Type Bushings	<b>117</b>
11kV Single Core Outdoor Terminations	<b>101</b>	Separable Connectors for B Type Bushing	<b>118</b>
11kV Three Core Indoor Terminations	<b>102</b>	Separable Connectors for C Type Bushing	<b>119</b>
11kV Heat Shrink/Cold Shrink Outdoor Terminations	<b>104</b>	Separable Connectors for D/E Type Bushing	<b>121</b>
33kV Indoor/Outdoor Terminations	<b>106</b>	HDC Cable Cabinets	<b>122</b>
11/33kV Indoor Accessories	<b>109</b>	Inner Cone Terminations	<b>124</b>
11/33kV Indoor/Outdoor Accessories	<b>111</b>	33 & 52kV Self Supporting Terminations	<b>125</b>
11/33kV Outdoor Accessories	<b>112</b>	52kV Heat Shrink/ Cold Shrink Terminations	<b>126</b>
11kV Indoor Accessories	<b>113</b>		
11/33kV Outdoor Accessories	<b>115</b>		



This 'mini-catalogue' focusing on MV Terminations is part of a larger, more comprehensive Power Cable Accessories Catalogue produced by Jointing Tech.

Please visit our website for more information and/or a copy of the full catalogue.

[www.jointingtech.co.uk](http://www.jointingtech.co.uk)



## Single Core Termination with Integral Stress Control for XLPE Cable - Indoor

### FEATURES

- Designed to terminate single core, polymeric insulated 11kV cables in indoor applications to switchgear and cable end boxes
- Suitable for both copper wire and copper tape screen cables
- Highly reliable UK industry standard termination
- Range taking with few components needed
- New ceramic stress control
- Compact design
- No shelf life limitation
- Suitable for use on 11kV triplex cables
- Kit contents: Insulation tubing including co-extruded stress control, sealant tapes and installation instructions
- Tested in accordance with CENELEC specification HD 629.1 and IEC, which encompasses IEC, BS and VDE etc.
- All IXSU/OXSU components have full traceability of raw materials and manufacture according to ISO 9001 and ISO 14001



**Single core heat shrink termination for XLPE cables in indoor applications**

Part number	Conductor Size
<b>IXSU-F-3111</b>	10-35mm <sup>2</sup>
<b>IXSU-F-3121</b>	25-95mm <sup>2</sup>
<b>IXSU-F-3131</b>	95-240mm <sup>2</sup>

Part number	Conductor Size
<b>IXSU-F-3141</b>	240-500mm <sup>2</sup>
<b>IXSU-F-3151</b>	500-800mm <sup>2</sup>
<b>IXSU-F-3161</b>	1000-1200mm <sup>2</sup>

## Single Core Termination for XLPE Copper Wire Screened Cables - Indoor

### FEATURES

- Designed to terminate single core, copper wire screened polymeric insulated 11kV cables in indoor applications to switchgear and cable end boxes
- No tools, easy install and ultra lightweight assembly
- Range taking with few components needed
- Inorganic cold shrink silicone insulation
- Kit contents: Termination body and mastic seal
- Tested in accordance CENELEC specification HD629.1 and IEC60502.04 which encompasses the BS, VDE etc.
- Versatile design of the prefabricated one-piece cold shrink termination body allows installation on a wide range of cable sizes and types and a fast and easy installation at temperatures ranging from -20°C to +50°C



**QTIII series single core cold shrink termination for XLPE cables indoor**

Part number	Conductor Size
<b>92-EP621-1</b>	50-95mm <sup>2</sup>
<b>92-EP631-1</b>	120-400mm <sup>2</sup>

Part number	Conductor Size
<b>92-EP641-1</b>	500-630mm <sup>2</sup>
<b>92-EP656-1</b>	800-1000mm <sup>2</sup>

## Single Core Termination for XLPE Copper Tape Screened Cables - Indoor



### FEATURES

- Designed to terminate single core, copper tape screened armoured polymeric insulated 11kV cables in indoor applications to switchgear and cable end boxes
- No tools, easy install and ultra lightweight assembly
- Range taking with few components needed
- Inorganic cold shrink silicone insulation
- Kit contents: Termination body, earthing kit and mastic seal
- Tested in accordance CENELEC specification HD629.1 which encompasses the BS, VDE etc.

**QTH series single core cold shrink termination for XLPE cables indoor**

Part number	Conductor Size
<b>92-EP623-1</b>	50-95mm <sup>2</sup>
<b>92-EP633-1</b>	120-150mm <sup>2</sup>

Part number	Conductor Size
<b>92-EP643-1</b>	185-400mm <sup>2</sup>
<b>92-EP653-1</b>	500-630mm <sup>2</sup>

## Single Core Termination with Integral Stress Control for XLPE Cable - Outdoor

### FEATURES

- Designed to terminate single core, polymeric insulated 11kV cables in outdoor applications such as pole top assemblies
- Highly reliable UK industry standard termination
- Range taking with few components needed
- New ceramic stress control
- Compact design
- No shelf life limitation
- Suitable for use on 11kV triplex cables
- Kit contents: Insulation tubing including co-extruded stress control, sealant tapes and installation instructions
- Tested in accordance with CENELEC specification HD 629.1 which encompasses IEC 60502.04, BS and VDE etc.
- All IXSU/OXSU components have full traceability of raw materials and manufacture according to ISO 9001 and ISO 14001



**Single core heat shrink termination for XLPE cables in outdoor applications**

Part number	Conductor Size
<b>OXSU-F-3111</b>	10-35mm <sup>2</sup>
<b>OXSU-F-3121</b>	25-95mm <sup>2</sup>
<b>OXSU-F-3131</b>	95-240mm <sup>2</sup>

Part number	Conductor Size
<b>OXSU-F-3141</b>	240-400mm <sup>2</sup>
<b>OXSU-F-3151</b>	500-800mm <sup>2</sup>
<b>OXSU-F-3161</b>	1000-1200mm <sup>2</sup>

## Single Core Termination for XLPE Copper Wire Screened Cables - Outdoor

### FEATURES

- Designed to terminate single core, copper wire screened polymeric insulated 11kV cables in outdoor applications such as pole top assemblies
- No tools, easy install and ultra lightweight assembly
- Range taking with few components needed
- Inorganic cold shrink silicone insulation
- Kit contents: Termination body and mastic seal
- Tested in accordance CENELEC specification HD629.1 which encompasses the BS, VDE etc.
- Versatile design of the prefabricated one-piece cold shrink termination body allows installation on a wide range of cable sizes and types and a fast and easy installation at temperatures ranging from -20°C to +50°C
- Skirts are integrated for easier and faster installation
- Cold shrink technology ensures quick, easy and safe installation.



**QTIII series single core cold shrink termination for XLPE outdoor cables**

Part number	Conductor Size
<b>92-EP621-2</b>	50-95mm <sup>2</sup>
<b>92-EP631-2</b>	120-400mm <sup>2</sup>

Part number	Conductor Size
<b>92-EP641-2</b>	500-630mm <sup>2</sup>

## Single Core Termination for XLPE Copper Tape Screened Cables - Outdoor



**QTI series single core cold shrink termination for XLPE outdoor cables**

### FEATURES

- Designed to terminate single core, polymeric insulated 11kV cables with copper tape screen, armour and or lead sheath
- No tools, easy install and ultra lightweight assembly
- Range taking with few components needed
- Inorganic cold shrink silicone insulation
- Tested in accordance CENELEC specification HD629.1 which encompasses the BS, VDE etc.
- Versatile design of the prefabricated one-piece cold shrink termination body allows installation on a wide range of cable sizes and types and a fast and easy installation at temperatures ranging from -20°C to +50°C
- Solderless earth connection using constant force springs
- Skirts are integrated for easier and faster installation
- Cold shrink technology ensures quick, easy and safe installation

Part number	Conductor Size
92-EP623-2	50-95mm <sup>2</sup>
92-EP633-2	120-150mm <sup>2</sup>

Part number	Conductor Size
92-EP643-2	185-400mm <sup>2</sup>
92-EP653-2	500-630mm <sup>2</sup>

## Three Core Terminations for XLPE Cables - Indoor

### FEATURES

- Designed to terminate three core, polymeric insulated 11kV cables in indoor applications to switchgear and cable end boxes
- Kit contents: stress control tubing, sealant coated breakouts and core insulation sleeves, sealant tapes, and installation instructions
- Tested in accordance with CENELEC specification HD 629.1 which encompasses IEC, BS and VDE etc



**Three core heat shrink termination for XLPE cables in indoor applications**

Part number	Conductor Size	Tail Length
EPKT17A3XIH2	16-25mm <sup>2</sup>	650mm
EPKT17A3XIH4	16-25mm <sup>2</sup>	1200mm
EPKT17B3XIH2	35-70mm <sup>2</sup>	650mm
EPKT17B3XIH4	35-70mm <sup>2</sup>	1200mm

Part number	Conductor Size	Tail Length
EPKT17C3XIH2	95-240mm <sup>2</sup>	650mm
EPKT17C3XIH4	95-240mm <sup>2</sup>	1200mm
EPKT17D3XIH2	300-400mm <sup>2</sup>	650mm
EPKT17D3XIH4	300-400mm <sup>2</sup>	1200mm

## Three Core Termination with Integral Stress Control for XLPE Cable - Indoor

### FEATURES

- Designed to terminate three core, polymeric insulated 11kV cables in indoor applications to switchgear and cable end boxes
- Highly reliable UK industry standard termination
- Range taking with few components needed
- New ceramic stress control
- Compact design
- No shelf life limitation
- Conductive tubing allows the crossing of the cores below the screen cut.
- Additional tubing is available should the tail lengths need to be increased above 1200mm.
- Kit contents: Insulation tubing including co-extruded stress control, sealant tapes, conductive breakouts and installation instructions
- Tested in accordance with CENELEC specification HD 629.1 which encompasses IEC, BS and VDE etc.
- All IXSU/OXSU components have full traceability of raw materials and manufacture according to ISO 9001 and ISO 14001



**Three core heat shrink termination for XLPE cables in indoor applications**

Part number	Conductor Size	Tail Length
IXSU-F-3301	10-16mm <sup>2</sup>	450mm
IXSU-F-3304	10-16mm <sup>2</sup>	1200mm
IXSU-F-3311	16-35mm <sup>2</sup>	450mm
IXSU-F-3314	16-35mm <sup>2</sup>	1200mm
IXSU-F-3321	25-70mm <sup>2</sup>	450mm

Part number	Conductor Size	Tail Length
IXSU-F-3324	25-70mm <sup>2</sup>	1200mm
IXSU-F-3331	95-240mm <sup>2</sup>	450mm
IXSU-F-3334	95-240mm <sup>2</sup>	1200mm
IXSU-F-3341	240-500mm <sup>2</sup>	450mm
IXSU-F-3344	240-500mm <sup>2</sup>	1200mm





## Three Core Terminations for XLPE Copper Tape Screened Cables - Indoor



**QTIII series three core cold shrink termination for XLPE cables indoor**

### FEATURES

- Designed to terminate three core, copper tape screened armoured polymeric insulated 11kV cables in indoor applications to switchgear and cable end boxes
- No tools, easy install and ultra lightweight assembly
- The versatile design of the prefabricated one-piece cold shrink termination body allows installation on a wide range of cable sizes and types and a fast and easy installation at temperatures ranging from -20°C to + 50°C
- Range taking with few components needed
- Inorganic cold shrink silicone insulation
- Kit contents: Termination body, breakouts, re-jacketing sleeve, earthing kit and mastics
- Tested in accordance CENELEC specification HD629.1 which encompasses the BS, VDE etc.

Part number	Conductor Size
92-EP626-3	50-120mm <sup>2</sup>
92-EP636-3	150-185mm <sup>2</sup>

Part number	Conductor Size
92-EP646-3	240-300mm <sup>2</sup>
92-EP656-3	150-400mm <sup>2</sup>



## Three Core Terminations for PILC/PICAS Cables - Indoor



**Three core heat shrink termination for PILC/PICAS cables in indoor applications**

### FEATURES

- Designed to terminate three core, paper insulated 11kV cables in indoor applications to switchgear and cable end boxes
- Available in 650mm and 1200mm tail lengths
- Compatible with crimp and mechanical lugs
- Range taking terminations with four sizes covering 16 to 400mm<sup>2</sup>
- Kit contents: stress control tubing, sealant coated breakouts and core insulation sleeves, sealant tapes, oil barrier tubes and installation instructions
- Tested in accordance with CENELEC specification HD629.1 which encompasses IEC, BS and VDE etc

Part number	Conductor Size	Tail Length
EPKT17A3MIH2	16-25mm <sup>2</sup>	650mm
EPKT17A3MIH4	16-25mm <sup>2</sup>	1200mm
EPKT17B3MIH2	35-70mm <sup>2</sup>	650mm
EPKT17B3MIH4	35-70mm <sup>2</sup>	1200mm

Part number	Conductor Size	Tail Length
EPKT17C3MIH2	95-240mm <sup>2</sup>	650mm
EPKT17C3MIH4	95-240mm <sup>2</sup>	1200mm
EPKT17D3MIH2	300-400mm <sup>2</sup>	650mm
EPKT17D3MIH4	300-400mm <sup>2</sup>	1200mm

### Three Core Terminations for XLPE Cables - Outdoor

#### FEATURES

- Designed to terminate three core, polymeric insulated 11kV cables in outdoor applications such as pole top assemblies
- Kit contents: stress control tubing, sealant coated breakouts and core insulation sleeves, sealant tapes, and installation instructions
- Tested in accordance with CENELEC specification HD629.1 which encompasses IEC, BS and VDE etc



**Three core heat shrink termination for XLPE cables in outdoor applications**

Part number	Conductor Size	Tail Length
EPKT17A3XOH2	16-25mm <sup>2</sup>	650mm
EPKT17A3XOH4	16-25mm <sup>2</sup>	1200mm
EPKT17B3XOH2	35-70mm <sup>2</sup>	650mm
EPKT17B3XOH4	35-70mm <sup>2</sup>	1200mm

Part number	Conductor Size	Tail Length
EPKT17C3XOH2	95-240mm <sup>2</sup>	650mm
EPKT17C3XOH4	95-240mm <sup>2</sup>	1200mm
EPKT17D3XOH2	300-400mm <sup>2</sup>	650mm
EPKT17D3XOH4	300-400mm <sup>2</sup>	1200mm

### Three Core Termination with Integral Stress Control for XLPE Cable - Outdoor

#### FEATURES

- Designed to terminate three core, polymeric insulated 11kV cables in outdoor applications such as pole top assemblies
- Highly reliable UK industry standard termination
- Range taking with few components needed
- New ceramic stress control
- Compact design
- No shelf life limitation
- Conductive tubing allows the crossing of the cores below the screen cut
- Additional tubing is available should the tail lengths need to be increased above 1200mm
- Kit contents: Insulation tubing including co-extruded stress control, sealant tapes, conductive breakouts and installation instructions
- Tested in accordance with CENELEC specification HD 629.1 which encompasses IEC, BS and VDE etc.
- All IXSU/OXSU components have full traceability of raw materials and manufacture according to ISO 9001 and ISO 14001



**Three core heat shrink termination for XLPE cables in outdoor applications**

Part number	Conductor Size	Tail Length
OXSU-F-3301	10-16mm <sup>2</sup>	450mm
OXSU-F-3304	10-16mm <sup>2</sup>	1200mm
OXSU-F-3311	16-35mm <sup>2</sup>	450mm
OXSU-F-3314	16-35mm <sup>2</sup>	1200mm
OXSU-F-3321	25-70mm <sup>2</sup>	450mm

Part number	Conductor Size	Tail Length
OXSU-F-3324	25-70mm <sup>2</sup>	1200mm
OXSU-F-3331	95-300mm <sup>2</sup>	450mm
OXSU-F-3334	95-300mm <sup>2</sup>	1200mm
OXSU-F-3341	240-500mm <sup>2</sup>	450mm
OXSU-F-3344	240-500mm <sup>2</sup>	1200mm

### Three Core Terminations for XLPE Copper Tape Screened Cables - Outdoor



#### FEATURES

- Designed to terminate three core, copper tape screened polymeric insulated 11kV cables in outdoor applications such as pole top assemblies
- No tools, easy install and ultra lightweight assembly
- Range taking with few components needed
- Inorganic cold shrink silicone insulation
- Kit contents: Termination body, breakout, rejacketing sleeve, earthing kit, mastics, Scotchcast™ resin and Scotch™ 70 tape
- Tested in accordance CENELEC specification HD629.1 which encompasses the BS, VDE etc.

**QTIII series three core cold shrink termination for XLPE cables in outdoor applications**

Part number	Conductor Size
<b>7691-S4-3W</b>	16-50mm <sup>2</sup>
<b>7692-S4-3W</b>	70-120mm <sup>2</sup>

Part number	Conductor Size
<b>7693-S4-3W</b>	150-300mm <sup>2</sup>

### Three Core Terminations for PILC/PICAS Cables - Outdoor



#### FEATURES

- Designed to terminate three core, paper insulated 11kV cables in outdoor applications such as pole top assemblies
- Range taking terminations with four sizes covering 16 to 400mm<sup>2</sup>
- Available in 650mm and 1200mm tail lengths
- Compatible with crimp and mechanical lugs
- Kit contents: stress control tubing, sealant coated breakouts and core insulation sleeves, sealant tapes, oil barrier tubes and installation instructions
- Tested in accordance with CENELEC specification HD629.1 which encompasses IEC, BS and VDE etc

**Three core heat shrink termination for PILC/ PICAS cables in outdoor applications**

Part number	Conductor Size	Tail Length
<b>EPKT17A3MOH2</b>	16-25mm <sup>2</sup>	650mm
<b>EPKT17A3MOH4</b>	16-25mm <sup>2</sup>	1200mm
<b>EPKT17B3MOH2</b>	35-70mm <sup>2</sup>	650mm
<b>EPKT17B3MOH4</b>	35-70mm <sup>2</sup>	1200mm

Part number	Conductor Size	Tail Length
<b>EPKT17C3MOH2</b>	95-240mm <sup>2</sup>	650mm
<b>EPKT17C3MOH4</b>	95-240mm <sup>2</sup>	1200mm
<b>EPKT17D3MOH2</b>	300-400mm <sup>2</sup>	650mm
<b>EPKT17D3MOH4</b>	300-400mm <sup>2</sup>	1200mm

## Single Core Terminations for XLPE Cables - Indoor

### FEATURES

- Designed to terminate single, polymeric insulated 33kV cables in indoor applications to switchgear and cable end boxes
- UK industry standard termination
- Outstanding reliability
- Range taking
- Few components needed
- Will accommodate copper wire and copper tape screen
- Simplified cable preparation
- Simplified installation
- Compact design
- No shelf life limitation
- Kit contents: stress control tubings, non tracking sleeve with sealant layer and void filling mastic with installation instructions
- Tested in accordance with CENELEC specification HD 629.1 which encompasses IEC, BS and VDE etc
- Components have full traceability of raw materials and manufacture according to ISO 9001 and ISO 14001



**Single core heat shrink termination for XLPE cables in indoor applications**

Part number	Conductor Size
EPKT36C1XI	50-95mm <sup>2</sup>
EPKT36D1XI	120-185mm <sup>2</sup>

Part number	Conductor Size
EPKT36E1XI	240-500mm <sup>2</sup>
EPKT36F1XI	630-1000mm <sup>2</sup>

## Single Core Terminations for XLPE Copper Wire Screen for Mechanical Lugs - Indoor/Outdoor

### FEATURES

- Designed to terminate single core, copper wire screened polymeric insulated 33kV cables in indoor/outdoor applications to switchgear, cable end boxes and pole top assemblies
- No tools, easy install and ultra lightweight assembly
- One-piece cold shrink termination body allows fast and easy installation
- Installation can be made from -20°C to +50°C
- Cold shrink technology mean the collapsible tubes are all shrink down to the correct limits
- Kit contents: Termination body and mastic seal
- Tested in accordance CENELEC specification HD629.1 which encompasses the BS, VDE etc.



**QTIII series single core cold shrink termination for XLPE copper wire screen indoor/outdoor**

Part number	Conductor Size
94-EP610-2	25-120mm <sup>2</sup>
94-EP620-2	50-150mm <sup>2</sup>

Part number	Conductor Size
94-EP630-2	120-300mm <sup>2</sup>
94-EP640-2	240-630mm <sup>2</sup>

## Single Core Termination for XLPE Copper Tape Screen Cables - Indoor/Outdoor



**QTH series single core cold shrink termination for XLPE copper tape screened cables armoured or lead indoor/outdoor**

### FEATURES

- Designed to terminate single core, copper tape screened polymeric insulated 33kV cables in indoor/outdoor applications to switchgear, cable end boxes and pole top assemblies
- No tools, easy install and ultra lightweight assembly
- One-piece cold shrink termination body allows fast and easy installation
- Installation can be made from -20°C to +50°C
- Cold shrink technology mean the collapsible tubes are all shrink down to the correct limits
- Kit contents: Termination body, earthing kit and mastic seal
- Tested in accordance CENELEC specification HD629.1 which encompasses the BS, VDE etc.

Part number	Conductor Size
94-EP612-2	50-120mm <sup>2</sup>
94-EP622-2	70-240mm <sup>2</sup>

Part number	Conductor Size
94-EP632-2	185-400mm <sup>2</sup>
94-EP642-2	400-630mm <sup>2</sup>

## Single Core Terminations for XLPE Cables - Outdoor



**Single core heat shrink termination for XLPE cables in outdoor applications**

### FEATURES

- Designed to terminate single core, polymeric insulated 33kV cables in outdoor applications such as pole top assemblies
- UK industry standard termination
- Outstanding reliability
- Range taking
- Few components needed
- Will accommodate copper wire and copper tape screen
- Simplified cable preparation
- Simplified installation
- Compact design
- No shelf life limitation
- Kit contents: stress control tubings, non tracking sleeve with sealant layer and void filling mastic with installation instructions
- Tested in accordance with CENELEC specification HD 629.1 which encompasses IEC, BS and VDE etc
- Components have full traceability of raw materials and manufacture according to ISO 9001 and ISO 14001

Part number	Conductor Size
EPKT36C1XO	50-95mm <sup>2</sup>
EPKT36D1XO	120-185mm <sup>2</sup>

Part number	Conductor Size
EPKT36E1XO	240-500mm <sup>2</sup>
EPKT36F1XO	630-1000mm <sup>2</sup>



## Three Core Terminations for XLPE Cables - Indoor

### FEATURES

- Designed to terminate three core, polymeric insulated 33kV cables in indoor applications to switchgear and cable end boxes
- UK industry standard termination
- Outstanding reliability
- Range taking
- Few components needed
- Simplified cable preparation
- Simplified installation
- Compact design
- No shelf life limitation
- Kit contents: stress control tubings, non tracking sleeve with sealant layer, conductive breakout and void filling mastic with installation instructions
- Tested in accordance with CENELEC specification HD 629.1 which encompasses IEC, BS and VDE etc
- Components have full traceability of raw materials and manufacture according to ISO 9001 and ISO 14001



**Three core heat shrink termination for XLPE cables in indoor applications**

Part number	Conductor Size
EPKT36C3XIH2	50-95mm <sup>2</sup>
EPKT36C3XIH4	50-95mm <sup>2</sup>
EPKT36D3XIH2	120-185mm <sup>2</sup>

Part number	Conductor Size
EPKT36D3XIH4	120-185mm <sup>2</sup>
EPKT36E3XIH2	240-500mm <sup>2</sup>
EPKT36E3XIH4	240-500mm <sup>2</sup>

## Three Core Terminations for XLPE Cables - Outdoor

### FEATURES

- Designed to terminate three core, polymeric insulated 33kV cables in outdoor applications such as pole top assemblies
- UK industry standard termination
- Outstanding reliability
- Range taking
- Few components needed
- Simplified cable preparation
- Simplified installation
- Compact design
- No shelf life limitation
- Kit contents: stress control tubings, non tracking sleeve with sealant layer, conductive breakout and void filling mastic with installation instructions
- Tested in accordance with CENELEC specification HD 629.1 which encompasses IEC, BS and VDE etc
- Components have full traceability of raw materials and manufacture according to ISO 9001 and ISO 14001



**Three core heat shrink termination for XLPE cables in outdoor applications**

Part number	Conductor Size
EPKT36C3XOH4	50-95mm <sup>2</sup>
EPKT36D3XOH4	120-185mm <sup>2</sup>

Part number	Conductor Size
EPKT36E3XOH4	240-500mm <sup>2</sup>

## Single Core Armoured Gland



**Aluminium gland kits for single core armoured cable**

### FEATURES

- Aluminium gland kit is designed to electrically earth the aluminium wire armours of the single core cables
- Suitable for use at 11 and 33kV
- Kit contents: three aluminium glands complete with heat shrink sleeve, jubilee clips and bolt pack
- Available with an insulating plate where separate earth facility is required (See insulating kit on page 110)

### Part number

**EAKT1608**

### Conductor Size

50-630mm<sup>2</sup>

## Three Core Armoured Gland



**Steel gland kits for three core armoured cable**

### FEATURES

- Steel gland kit is designed to electrically earth the steel wire armours of the multi-core cables
- Suitable for use at 11 and 33kV
- Kit contains one steel gland complete with either heat shrink or cold shrink sleeve, jubilee clips and bolt pack
- Available with an insulating plate where separate earth facility is required (See page 110)

### Part number

**EAKT1605**

### Conductor Size

up to 70mm<sup>2</sup>

**EAKT1606**

95-300mm<sup>2</sup>

**THG1**

36-65mm (cable OD)

**THG2**

53-94mm (cable OD)

### Part number

**THGS1 (Cold shrink seal)**

### Application Range

To fit THG1

**THGS2 (Cold shrink seal)**

To fit THG2

## Heat Shrink Cable Entry Seal



**Heat shrink glands for unarmoured cables**

### FEATURES

- Designed to provide a heat shrinkable watertight cable entry seal where unarmoured cables enter enclosures
- Manufactured from flame retardant polyolefin
- Temperature rated from -55°C to 90°C
- All cable entry seals are adhesive lined to provide a suitable seal
- Kit contents: a rigid nylon nut, O ring, and a heat shrinkable mould area

### Part number

**CES-1**

### Drill Size

25.4

### Minimum Size Expanded

12.7

### Maximum Size Recovered

4.32

**CES-2**

25.4

19.05

6.35

**CES-3**

35.05

28.45

12.7

**CES-4**

50.8

40.64

19.05

**CES-5**

88.9

69.85

36.32

## Brass Wiping Cones

### FEATURES

- Designed to mechanically earth the lead sheaths of PILC cables
- Kit includes: Brass cone, bolt pack, heat shrink sleeve and jubilee clips
- Gland can be cut to suit the relevant cable size
- Can be used with insulating plates EPPA-045-1 for Size X and EPPA-045-2 for Size Y



Earth gland where plumbing of a lead sheath is required

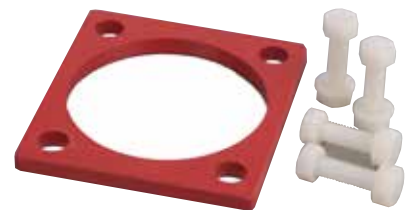
Part number	Application
<b>GWCX</b>	Wiping Cone Size X

Part number	Application
<b>GWCY</b>	Wiping Cone Size Y

## Insulating Kits

### FEATURES

- Allows the armour gland to be insulated from the enclosure.
- Kit contains: one Epoxy resin plate, plastic nuts and bolts
- Please note three kits should be ordered for single core applications (EAKT1608)
- Plate approx 10mm thick
- Suitable for use at 11 and 33kV

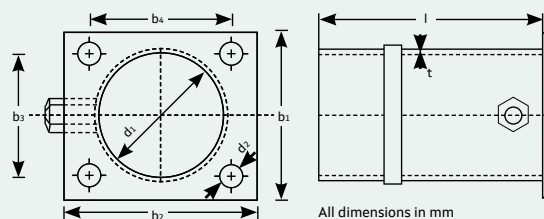


Insulating plate to suit armoured glands

Part number	Application
<b>EPPA-045-1</b>	To fit EAKT1605 & EAKT1608

Part number	Application
<b>EPPA-045-2</b>	To fit EAKT1606

### TE/Raychem Cable Gland Dimensions



Size	b1	b2	b3	b4	d1	d2	l	t
X	90	90	66	66	68	11	140	1
Y	115	125	86	95	97	15	150	1.5

### Solderless Earth Spring Kits for Single & Three Core Copper Tape Screened Cables



#### FEATURES

- Designed to mechanically earth the copper tape screens of XLPE cables
- Kit contents: tinned copper earth braids and a roll spring for each phase

#### Solderless earth connection system for XLPE cables

Part number	Diameter over screen	Conductor range	
		11kV	33kV
<b>EAKT1655</b>	12-18mm	16-50mm <sup>2</sup>	-
<b>EAKT1656</b>	19-24mm	70-150mm <sup>2</sup>	25-35mm <sup>2</sup>
<b>EAKT1657</b>	25-30mm	185-240mm <sup>2</sup>	50-70mm <sup>2</sup>

Part number	Diameter over screen	Conductor range	
		11kV	33kV
<b>EAKT1658</b>	31-44mm	300-630mm <sup>2</sup>	95-300mm <sup>2</sup>
<b>EAKT1659</b>	41-65mm	800-1000mm <sup>2</sup>	400-1000mm <sup>2</sup>

### Solderless Earth Spring Kits for Three Core PILC Cables



#### FEATURES

- Designed to mechanically earth the lead sheaths of PILC cables
- Kit contents: tinned copper earth braid roll spring and a heat shrink sleeve

#### Solderless earth connection system for PILC cables

Part number	Diameter over lead sheath	Conductor range	
		11kV	33kV
<b>EAKT1669</b>	28-39mm	16-95mm <sup>2</sup>	-
<b>EAKT1670</b>	40-50mm	120-185mm <sup>2</sup>	-

Part number	Diameter over lead sheath	Conductor range	
		11kV	33kV
<b>EAKT1671</b>	51-60mm	240-300mm <sup>2</sup>	50mm <sup>2</sup>
<b>EAKT1672</b>	61-80mm	400mm <sup>2</sup>	70-300mm <sup>2</sup>

### Solderless Earth Spring Kits for PICAS Cables



#### FEATURES

- Designed to mechanically earth the aluminium armour of PICAS cables
- Simple to install, high reliability
- Kit contents: tinned copper braid, beryllium strip, mastic, jubilee clip and heat shrink tube

#### Solderless earth connection system

Part number	Conductor Size
<b>SMOE61203 (MEC5) 11kV</b>	95-300mm <sup>2</sup>

## Armour Earthing Kit for Single Core Armoured Plastic and Rubber Insulated Cables

### FEATURES

- Designed to terminate wire armoured plastic cables by means of mechanical clamping rings
- Heat shrinkable tubing for corrosion protection
- Confirm cable diameters prior to ordering



**Armour earthing kit for single core armoured XLPE cables**

Part number	Overall diameter range	Conductor range	
		11kV	33kV
<b>EAKT1636</b>	21-32mm	16-70mm <sup>2</sup>	-
<b>EAKT1637</b>	33-50mm	95-400mm <sup>2</sup>	16-185mm <sup>2</sup>
<b>EAKT1638</b>	51-67mm	500-800mm <sup>2</sup>	240-630mm <sup>2</sup>

## Armour Earthing Kit for Three Core Armoured Plastic and Rubber Insulated Cables

### FEATURES

- Designed to terminate wire armoured plastic cables by means of mechanical clamping rings
- Heat shrinkable tubing for corrosion protection



**Armour earthing kit for three core armoured XLPE cables**

Part number	Overall diameter range	Conductor range	
		11kV	33kV
<b>EAKT1642</b>	40-67mm	16-120mm <sup>2</sup>	16-25mm <sup>2</sup>
<b>EAKT1643</b>	50-86mm	150-240mm <sup>2</sup>	35-95mm <sup>2</sup>
<b>EAKT1644</b>	60-94mm	300-400mm <sup>2</sup>	120-185mm <sup>2</sup>
<b>EAKT1645</b>	70-110mm	-	240-300mm <sup>2</sup>

## Armour Earthing Kit for Three Core Armoured PILC Cables

### FEATURES

- Designed to terminate wire armoured paper cables by means of mechanical clamping rings
- Heat shrinkable tubing for corrosion protection



**Armour earthing kit for three core armoured PILC cables**

Part number	Overall diameter range	Conductor range	
		11kV	33kV
<b>EAKT1641</b>	28-50mm	16-120mm <sup>2</sup>	-
<b>EAKT1642</b>	40-67mm	150-300mm <sup>2</sup>	50-120mm <sup>2</sup>
<b>EAKT1643</b>	50-86mm	400mm <sup>2</sup>	150-300mm <sup>2</sup>



## Universal Cold Applied Boot Kit



**Insulating boots for straight or right angle applications**

### FEATURES

- Used in switchgear and transformers where the clearances are insufficient for operation in air or to protect against flash over due to rodents or extreme humidity
- Can be used as a straight or right angled boot
- Bushing kit available for smaller bushing diameters (below 46mm)
- Easy to remove (no mastic components)

Part number	Application	Conductor Size
<b>SMOE62803</b>	-	10-400mm <sup>2</sup>
<b>RCAB-C-421</b>	31-45mm Bushing Kit For SMOE62803	-

## Straight/Right Angle Heat Shrink Boots



**Insulating boots for straight and right angle connections**

### FEATURES

- Used in switchgear and transformers where the clearances are insufficient for operation in air or to protect against flash over due to rodents or extreme humidity
- Both boots are moulded which are shrunk over the connection between cable and bushing
- Kit includes three boots and mastic kit

Part number	Application	Conductor Size
<b>RSRB4022</b>	Straight	10-35mm <sup>2</sup>
<b>RSRB4024</b>	Straight	50-95mm <sup>2</sup>
<b>RSRB4026</b>	Straight	120-300mm <sup>2</sup>
<b>RSRB4042</b>	Right Angle	10-35mm <sup>2</sup>
<b>RSRB4044</b>	Right Angle	50-95mm <sup>2</sup>
<b>RSRB4046</b>	Right Angle	120-300mm <sup>2</sup>

## Cold Shrink Barrier Tube



**Pre-stretched tubing on a collapsible core for simple installation**

### FEATURES

- Used in switchgear and transformers where the clearances are insufficient for operation in air or to protect against flash over due to extreme humidity
- Track resistant EPDM rubber
- 11kV rated product
- Complete cold shrink system - no heat required

Part number	Application Range	Application
<b>MB63</b>	Up to 630mm <sup>2</sup>	Cold Shrink in line boot

## Cold Applied Barrier Boot System

### FEATURES

- Used in switchgear and transformers where the clearances are insufficient for operation in air or to protect against flash over due to rodents or extreme humidity
- Can be used as a straight or right angled boot
- Track resistant EPDM rubber
- 11kV rated product
- Complete cold applied system - no heat required



**One Piece Cold Applied Boot**

Part number	Description
92-EE717-1	Universal Push on boot 50-300mm <sup>2</sup>
92-EE717-1-BSK	Build up kit for bushings smaller than 40mm <sup>2</sup>

## Right Angle Heat Shrink Boot Kit for 33kV

### FEATURES

- Designed to be used in switchgear and transformers where the clearances are insufficient for operation in air or to protect against flash over due to rodents or extreme humidity
- Exceptional insulation and long term reliability even at high continuous operating temperatures
- High reliability heat shrink components
- Simplified installation
- Kit includes three right angle boots and mastic kit

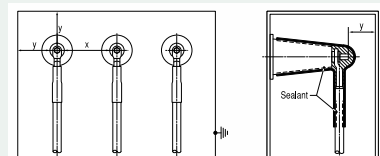


**Insulating boot kit for right angle applications**

Part number	Conductor Size
SMOE50383	95-300mm <sup>2</sup>

### Clearances: Phase-Phase and Phase-Earth

Check the cable box clearances with Table 1. If X and Y are less than the values given in Table 1, Raychem insulating boots must be used.



**Table 1 - Minimum air clearances for terminations in cable boxes in accordance with BS 162 Class A**

Highest voltage for cable, phase-phase (kV)	6.6	11	22	33
Minimum air clearance between live metal x (mm)	90	127	242	356
Minimum air clearance between live metal and ground Y (mm)	65	75	140	222

**Table 2 - Impulse voltage withstand for Raychem indoor terminations with insulating boots based on bushings in accordance with BS 2562**

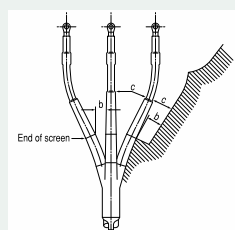
Impulse voltage withstand (kV)	75	95	125	170
Minimum clearance between live metal X (mm)	45	75	100	125
Minimum clearance between live metal and ground Y (mm)	32	60	75	100

**Table 3 - Minimum clearance between the cores and the cores and ground**

Highest voltage for cable, phase-phase (kV)	6.6	11	22	33
Minimum clearance b (mm)	10	15	25	35
c (mm)	15	20	40	50

b is measured at the end of the core screen.

c is measured at the end of the stress control tubing.



## Pole Top Bracket and Cleat



**For outdoor applications**

### FEATURES

- Galvanised bracket and cleat for supporting cables.
- Can be used with surge arrestors or insulators

### Part number

**EXRM-0969-39**

## Support Insulators and Brackets



**Cable mounting bracket  
outdoor application**

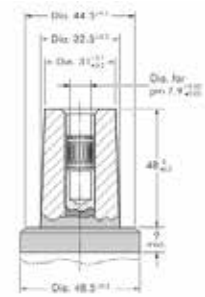
### FEATURES

- The sheds of red, non tracking, flexible polymeric material are mounted on a porcelain core
- Set of three complete with galvanised steel bracket

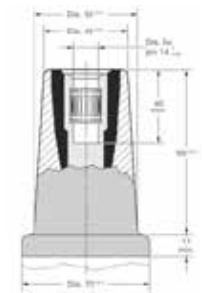
Part number	Voltage
<b>EAKT1524</b>	33kV

Part number	Voltage
<b>EAKT1521</b>	11kV

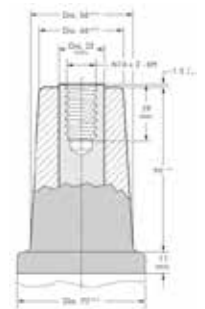
Voltage range between 12-24kV  
Current rating 250amp (copper pin)  
Bushing has 7.9mm plug in pin



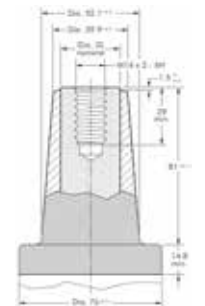
Voltage range between 12-36kV  
Current rating 400amp (copper pin)  
Bushing has 14mm plug in pin



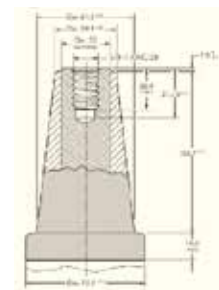
Voltage class between 12-36kV  
Current rating 630 & 1250 amps (copper stud)  
M16 bolted



Voltage range between 12-24kV  
Current rating 800amps (ali stud) or 1250amps (copper stud)  
5/8" bolted



Voltage range 12-36kV  
Current rating 800amps (ali Stud) or 1250amps (copper stud)  
5/8" bolted





**Separable connector system for interface A bushing 12-24kV 250A**

### Separable Connector System for Pin Type A (200 Series) Bushing

#### FEATURES

- Designed to facilitate the easy connection and disconnection of single core copper wire screened XLPE cables to medium voltage switchgear and transformer equipment
- Manufactured from crosslinked EPDM and protected with a minimum 3mm layer of moulded conductive outer layer
- These deadbreak adaptors are suitable for indoor and outdoor applications
- Their wide application range covers several different cable cross sections without the need for additional cable adaptors
- Available in straight and elbow configuration
- Supplied with high strength bimetallic compression connectors to connect copper and aluminium conductors
- The screened cable connector exceeds CENELEC HD 629.1 S1 requirements which includes BS, VDE and other international specifications
- Maximum System Voltage 24kV
- Continuous Current 250A

Part number	Adaptor Type	Conductor Size	Dia Core Insulation
RSSS-5201	Straight	16mm <sup>2</sup>	13.5mm - 17.4mm
RSSS-5202	Straight	25mm <sup>2</sup>	13.5mm - 17.4mm
RSSS-5203	Straight	35mm <sup>2</sup>	13.5mm - 17.4mm
RSSS-5205	Straight	50mm <sup>2</sup>	13.5mm - 17.4mm
RSSS-5217	Straight	70mm <sup>2</sup>	16.3mm - 20.8mm
RSSS-5219	Straight	95mm <sup>2</sup>	16.3mm - 20.8mm
RSES-5201	Elbow	16mm <sup>2</sup>	13.5mm - 17.4mm

Part number	Adaptor Type	Conductor Size	Dia Core Insulation
RSES-5202	Elbow	25mm <sup>2</sup>	13.5mm - 17.4mm
RSES-5203	Elbow	35mm <sup>2</sup>	13.5mm - 17.4mm
RSES-5205	Elbow	50mm <sup>2</sup>	13.5mm - 17.4mm
RSES-5217	Elbow	70mm <sup>2</sup>	16.3mm - 20.8mm
RSES-5219	Elbow	95mm <sup>2</sup>	16.3mm - 20.8mm
RSES-5224	Elbow	120mm <sup>2</sup>	19.6mm - 24.1mm



**Separable connector system for interface A bushing 12-24kV 250A**

### Separable Connector System for Pin Type A (200 Series) Bushing

#### FEATURES

- Designed to facilitate the easy connection and disconnection of single core copper wire screened XLPE cables to medium voltage transformer and switchgear equipment
- The connectors are manufactured in three layers, a conductive inner layer, an insulation layer and a conductive outer layer
- The materials are vulcanised together to give the best possible interface between layers
- The cable connector includes a capacitive test point with protection and integrated earthing wire
- UV, ozone and tracking resistant
- Available in straight and elbow configuration
- Screen separation kit can be ordered separately for three core cables
- Supplied with bimetallic mechanical lugs to connect copper and aluminium conductor
- The screened cable connector exceeds CENELEC HD 629.52 S1 requirements which includes BS, VDE and other international specifications
- Maximum System Voltage 24kV
- Continuous Current 250A

Part number	Conductor Size	Type	Voltage	Core Insulation Diameter
CSS-A 12250-01	10-16mm <sup>2</sup>	STRAIGHT	12kV	10-12mm
CSS-A 12250-02	25-95mm <sup>2</sup>	STRAIGHT	12kV	13-22mm
CSS-A 24250-01	10-16mm <sup>2</sup>	STRAIGHT	24kV	13-22mm
CSS-A 24250-02	25-95mm <sup>2</sup>	STRAIGHT	24kV	17-25.5mm

Part number	Conductor Size	Type	Voltage	Core Insulation Diameter
CSE-A 12250-01	10-16mm <sup>2</sup>	ELBOW	12kV	10-12mm
CSE-A 12250-02	25-95mm <sup>2</sup>	ELBOW	12kV	13-22mm
CSE-A 24250-01	10-16mm <sup>2</sup>	ELBOW	24kV	13-22mm
CSE-A 24250-02	25-95mm <sup>2</sup>	ELBOW	24kV	17-25.5mm



### Separable Connector System for Pin Type B (400 Series) Bushing

#### FEATURES

- Designed to facilitate the easy connection and disconnection of single core copper wire screened XLPE cables to medium voltage transformer and switchgear equipment
- The insulation of the connector is made of a highly modified silicone rubber characterised by high tracking resistance, elongation at break and non flammability
- The screened connector need not be removed for over sheath testing
- The compact design supports the use of double T connections inside standard terminal boxes
- Easily accessible rear plug with capacitive test point
- A thin walled screen is permanently bonded onto the insulation and protects the connection system against accidental contact.
- The screened cable connector exceeds CENELEC HD 629.1S2 requirements, which includes BS, VDE and other international standards.
- The use of mechanical lugs are designed to accept Cu or Al conductors



**Separable connector system for interface B bushing 24-36kV 400A**

Part number	Cross Section	Voltage	Core Insulation Diameter
<b>RSES-6451</b>	70-95mm <sup>2</sup>	24kV	22.4-35.5mm
<b>RSES-6452</b>	95-240mm <sup>2</sup>	24kV	22.4-35.5mm

Part number	Cross Section	Voltage	Core Insulation Diameter
<b>RSES-6455</b>	185-300mm <sup>2</sup>	24kV	22.4-35.5mm

### Separable Connector System for Pin Type B (400 Series) Bushing

#### FEATURES

- Designed to facilitate the easy connection and disconnection of single core copper wire screened XLPE cables to medium voltage transformer and switchgear equipment
- The connectors are manufactured in three layers, a conductive inner layer, an insulation layer and a conductive outer layer
- The materials are vulcanised together to give the best possible interface between layers
- The cable connector includes a capacitive test point with protection and integrated earthing wire
- UV, ozone and tracking resistant
- Supplied with bimetallic mechanical lugs to connect copper and aluminium conductor



**Separable connector system for interface B bushing 12-36kV 400A**

Part number	Conductor Size	Voltage	Core Insulation Diameter
<b>CSE-A 12400-01</b>	25-70mm <sup>2</sup>	12kV	13-20mm
<b>CSE-A 12400-02</b>	95-300mm <sup>2</sup>	12kV	18.5-30.5mm
<b>CSE-A 24400-01</b>	25-70mm <sup>2</sup>	24kV	17-24mm

Part number	Conductor Size	Voltage	Core Insulation Diameter
<b>CSE-A 24400-02</b>	95-300mm <sup>2</sup>	24kV	22.5-35mm
<b>CSE-A 36400-01</b>	25-70mm <sup>2</sup>	36kV	24.5-34mm
<b>CSE-A 36400-02</b>	95-300mm <sup>2</sup>	36kV	27.5-42mm

### Separable Connector System for Bolted Type C (400 Series) Bushing



**Separable connector system for interface C bushing 12-36kV 800A**

#### FEATURES

- Designed to facilitate the easy connection and disconnection of single core copper wire screened XLPE cables to MV transformer and switchgear equipment
- The insulation of the connector is made of a highly modified silicone rubber characterised by high tracking resistance, elongation at break and non flammability
- The screened connector need not be removed for over sheath testing
- The compact design supports the use of double T connections inside standard terminal boxes
- Easily accessible rear plug with capacitive test point
- Available with CU or AL compression lugs or mechanical connectors

Part Number	Conductor size			Core insulation diameter
	11kV	24kV	36kV	
<b>RSTI-5851</b>	35-95mm <sup>2</sup>	35-70mm <sup>2</sup>	-	12.7-23.4mm
<b>RSTI-5852</b>	95-120mm <sup>2</sup>	-	-	12.7-23.4mm
<b>RSTI-5853</b>	95-240mm <sup>2</sup>	95-185mm <sup>2</sup>	-	17.0-30.1mm
<b>RSTI-5854</b>	150-240mm <sup>2</sup>	95-240mm <sup>2</sup>	-	21.2-34.6mm
<b>RSTI-5855</b>	185-300mm <sup>2</sup>	185-300mm <sup>2</sup>	-	21.2-34.6mm
<b>RSTI-5856</b>	240-400mm <sup>2</sup>	-	-	21.2-34.6mm
<b>RSTI-6851</b>	-	-	35-95mm <sup>2</sup>	22.4-35.5mm
<b>RSTI-6852</b>	-	-	95-150mm <sup>2</sup>	22.4-35.5mm
<b>RSTI-6853</b>	-	-	120-240mm <sup>2</sup>	28.9-42.0mm
<b>RSTI-6855</b>	-	-	185-300mm <sup>2</sup>	28.9-42.0mm

### Separable Connector Coupling System for Bolted Type C (400 Series) Bushing



**Coupling connector system for interface C bushing 12-36kV 800A**

#### FEATURES

- Angled prefabricated shielded parallel adapter made of silicone rubber, which does not require heat during installation
- Integrated stress control. Separate termination not required
- Three core kits include materials for core screening. Up to 2000mm tail length
- Test point for capacitive voltage measurement
- Mechanical lugs included, compression lugs on request
- Kits include materials for three phases

Part Number	Conductor size			Core insulation diameter
	11kV	24kV	36kV	
<b>RSTI-CC-5851</b>	35-95mm <sup>2</sup>	35-70mm <sup>2</sup>	-	12.7-23.4mm
<b>RSTI-CC-5852</b>	95-120mm <sup>2</sup>	-	-	12.7-23.4mm
<b>RSTI-CC-5853</b>	95-240mm <sup>2</sup>	95-185mm <sup>2</sup>	-	17.0-30.1mm
<b>RSTI-CC-5854</b>	150-240mm <sup>2</sup>	95-240mm <sup>2</sup>	-	21.2-34.6mm
<b>RSTI-CC-5855</b>	185-300mm <sup>2</sup>	185-300mm <sup>2</sup>	-	21.2-34.6mm
<b>RSTI-CC-5856</b>	240-400mm <sup>2</sup>	-	-	21.2-34.6mm
<b>RSTI-CC-6851</b>	-	-	35-95mm <sup>2</sup>	22.4-35.5mm
<b>RSTI-CC-6852</b>	-	-	95-150mm <sup>2</sup>	22.4-35.5mm
<b>RSTI-CC-6853</b>	-	-	120-240mm <sup>2</sup>	28.9-42.0mm
<b>RSTI-CC-6855</b>	-	-	120-300mm <sup>2</sup>	28.9-42.0mm

### Separable Connector System For Bolted Type C (400 Series) Bushing

#### FEATURES

- Designed to facilitate the easy connection and disconnection of single core copper wire screened XLPE cables to medium voltage transformer and switchgear equipment
- The connectors are manufactured in three layers, a conductive inner layer, an insulation layer and a conductive outer layer
- The materials are vulcanised together to give the best possible interface between layers
- The cable connector includes a capacitive test point with protection and integrated earthing wire
- UV, ozone and tracking resistant
- Available in straight and elbow configuration
- Screen separation kit can be ordered separately for three core cables
- Supplied with bimetallic mechanical lugs to connect copper and aluminium conductor
- The screened cable connector exceeds CENELEC HD 629.52 S1 requirements which includes BS, VDE and other international specifications
- Maximum System Voltage 36kV
- Continuous Current 630A



**Separable connector system for interface C bushing 12-36kV 630A**

Part number	Conductor Size	Voltage	Core Insulation Diameter
<b>CSE-A 12630-01</b>	25-70mm <sup>2</sup>	12kV	13-20mm
<b>CSE-A 12630-02</b>	95-300mm <sup>2</sup>	12kV	18.5-30.5mm
<b>CSE-A 12630-03</b>	400-630mm <sup>2</sup>	12kV	30.5-45mm
<b>CSE-A 24630-01</b>	25-70mm <sup>2</sup>	24kV	17.0-24mm
<b>CSE-A 24630-02</b>	95-300mm <sup>2</sup>	24kV	22.5-35mm

Part number	Conductor Size	Voltage	Core Insulation Diameter
<b>CSE-A 24630-03</b>	400-630mm <sup>2</sup>	24kV	30.5-45mm
<b>CSE-A 36630-01</b>	25-70mm <sup>2</sup>	36kV	24.5-34mm
<b>CSE-A 36630-02</b>	95-300mm <sup>2</sup>	36kV	27.5-42mm
<b>CSE-A 36630-03</b>	400-630mm <sup>2</sup>	36kV	38.0-55mm

### Separable connector coupling system for bolted type C (400series) Bushing

#### FEATURES

- CSEP-A is a screened separable parallel cable connector designed to be connected to a screened separable cable connector type CSE-A-630.
- Can be used with XLPE or EPR insulation
- Supplied with mechanical connectors that can be used with CU or ALI cable conductors
- Screen separation kit can be ordered separately for three core cables
- UV, Ozone and tracking resistant
- The screened cable connector exceeds CENELEC HD 629.1 S1 requirements which includes BS, VDE and other international specifications



**Coupling connector system for interface C bushing 12-36kV 800A**

Part number	Conductor Size	Voltage	Core Insulation Diameter
<b>CSEP-A-12630-01</b>	25-70mm <sup>2</sup>	12kV	13-20mm
<b>CSEP-A-12630-02</b>	95-300mm <sup>2</sup>	12kV	18.5-30.5mm
<b>CSEP-A-12630-03</b>	400-630mm <sup>2</sup>	12kV	30.5-45mm
<b>CSEP-A-24630-01</b>	25-70mm <sup>2</sup>	24kV	17.0-24mm
<b>CSEP-A-24630-02</b>	95-300mm <sup>2</sup>	24kV	22.5-35mm

Part number	Conductor Size	Voltage	Core Insulation Diameter
<b>CSEP-A-24630-03</b>	400-630mm <sup>2</sup>	24kV	30.5-45mm
<b>CSEP-A-36630-01</b>	25-70mm <sup>2</sup>	36kV	24.5-34mm
<b>CSEP-A-36630-02</b>	95-300mm <sup>2</sup>	36kV	27.5-42mm
<b>CSEP-A-36630-03</b>	400-630mm <sup>2</sup>	36kV	38.0-55mm

### Separable connector system for bolted Type D (600 series) Bushing



#### FEATURES

- Designed to connect single core XLPE CWS cables to transformers and switchgear with D type bushing
- 25-630mm<sup>2</sup> conductor size range using mechanical connector
- Fully shielded, submersible and meets the requirements of IEEE std 386
- Moulded T body adapts to all cable and provides a deadfront shielded connection
- Moulded cable adapter, sized to fit cable insulation diameters from 16.3mm to 49.9mm providing stress relief for the terminated cable
- Insulating plug cap fits over insulating plug test point for waterproof seal and deadfront shielding
- Moulded epoxy insulating plug provides excellent electrical, thermal and mechanical reliability
- Available for use with Al/Cu bushing, please specify at time of order
- Tested in accordance with IEEE Std 386 standard. AC 60Hz 1 minute withstand -40kV, minimum partial discharge extinction voltage -19kV

Part Number	Conductor Size	Voltage	Bushing Cu/Al
15BT-W-25/150SH-IPWS	25-150mm <sup>2</sup>	12-24kV	Aluminium
15BT-W-95/300SH-IPWS	95-300mm <sup>2</sup>	12-24kV	Aluminium
15BT-W-400/400SH-IPWS	400mm <sup>2</sup>	12-24kV	Aluminium
15BT-W-500/630SH-IPWS	500-630mm <sup>2</sup>	12-24kV	Aluminium
15BT-W-25/150SH-IPWS(C)	25-150mm <sup>2</sup>	12-24kV	Copper

Part Number	Conductor Size	Voltage	Bushing Cu/Al
15BT-W-25/150SH-IPWS(C)	95-300mm <sup>2</sup>	12-24kV	Copper
15BT-W-25/150SH-IPWS(C)	400mm <sup>2</sup>	12-24kV	Copper
15BT-W-25/150SH-IPWS(C)	500-630mm <sup>2</sup>	12-24kV	Copper
W will be replaced once core insulation diameter is provided			

### Separable connector system for bolted Type E (700 series) Bushing



#### FEATURES

- Designed to connect single core XLPE CWS cables to transformers and switchgear with E type bushing
- 25-630mm<sup>2</sup> conductor size range using mechanical connector
- Fully shielded, submersible and meets the requirements of IEEE std 386
- Designed to be used on either XLPE or EPR cable insulation
- Moulded cable adapter, sized to fit cable insulation diameters from 22.2mm to 47.6mm providing stress relief for the terminated cable
- Insulating plug cap fits over insulating plug test point for waterproof seal and deadfront shielding
- Moulded epoxy insulating plug provides excellent electrical, thermal and mechanical reliability
- Available for use with Al/Cu bushing, please specify at time of order
- Tested in accordance with IEEE Std 386 standard. AC 60Hz 1 minute withstand -50kV, minimum partial discharge extinction voltage -26kV

Part Number	Conductor Size	Voltage	Bushing Cu/Al
35BT-W-25/150SH-IPWS	25-150mm <sup>2</sup>	12-36kV	Aluminium
35BT-W-95/300SH-IPWS	95-300mm <sup>2</sup>	12-36kV	Aluminium
35BT-W-400/400SH-IPWS	400mm <sup>2</sup>	12-36kV	Aluminium
35BT-W-500/630SH-IPWS	500-630mm <sup>2</sup>	12-36kV	Aluminium
35BT-W-25/150SH-IPWS(C)	25-150mm <sup>2</sup>	12-36kV	Copper

Part Number	Conductor Size	Voltage	Bushing Cu/Al
35BT-W-25/150SH-IPWS(C)	95-300mm <sup>2</sup>	12-36kV	Copper
35BT-W-25/150SH-IPWS(C)	400mm <sup>2</sup>	12-36kV	Copper
35BT-W-25/150SH-IPWS(C)	500-630mm <sup>2</sup>	12-36kV	Copper
W will be replaced once core insulation diameter is provided			

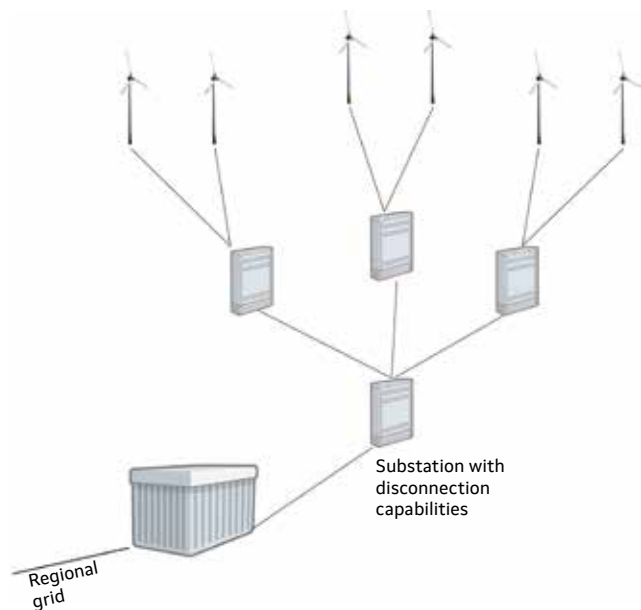
## Kabeldon Cable Cabinets

### APPLICATION

- HDC-A cabinets are excellent for use within wind or solar farm connections. Each cable cabinet can be used as branching points so that separate cables don't need to be run between turbines/solar panels and a substation.

### WIND FARMS: TYPICAL INSTALLATION

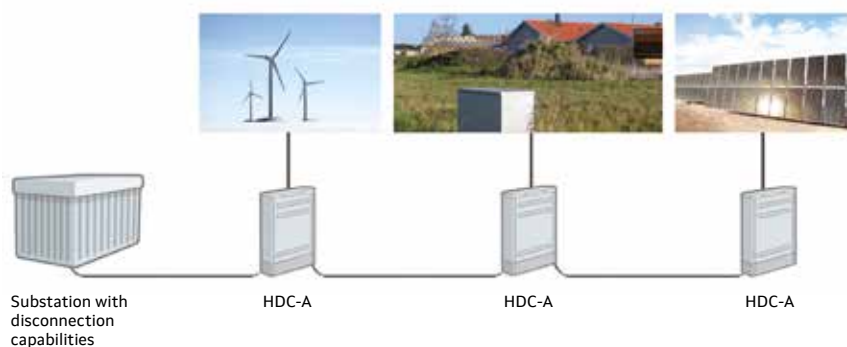
- From each wind turbine three x 1c cables run to a cable cabinet, two wind turbines are connected in each cable cabinet, the cables are terminated using separable connectors. From each of these cable cabinets a third set of cables run to another cabinet where everything is tied together. (See image right)



### BENEFITS

- Because cables are connected in a cabinet they can be sectionalized for maintenance. Disconnected cables can be earthed with special earthing devices and tools.
- Cable cabinets can be surface mounted eliminating the need for excavation of joint bays as the cables are connected using separable connectors.
- Less cable and ground excavation is required due to the fewer links between wind turbines (see image below)

### General diagram for cable grid with HDC-A



### STANDARDS

- Enclosures: Impact testing according to international standards IEC 60439-5
- Separable Connectors: European standard CENELEC HD 629.1 S2



HDC-A  
24250



HDC-A  
24630



HDC-A  
36630



## HDC Cable Cabinet 250A



**HDC cable cabinets to join and branch 1-core and three-core XLPE cables 12-24kV**

### FEATURES

- The enclosure is made of hot dip galvanised sheet steel with foundation base plate
- Additional corrosion protection for buried parts
- The screened separable cable connections are connected by coupling pieces which are mounted in the enclosure
- Any chosen cable can be disconnected for live sectioning or to be earthed
- The cabinet is supplied with padlocks and shackles
- For three core cables, screen separation kits must be used
- The cable cabinet is supplied with 3 x 3 phase kits, separable connectors, capacitive test point included
- Enclosures meet the requirements of mechanical impact tests - IEC 60439-5
- Meets the requirements of electrical tests - SS424 14 45
- Cenelec: HD 629.1 S1

Part number	Voltage	Conductor Size
<b>HDC-A 12250</b>	12kV	25-95mm <sup>2</sup>

Part number	Voltage	Conductor Size
<b>HDC-A 24250</b>	24kV	25-95mm <sup>2</sup>

## HDC Cable Cabinet 630A



**HDC cable cabinets to join and branch 1-core and three-core XLPE cables 12-36kV**

### FEATURES

- The enclosure is made of hot dip galvanised sheet steel with foundation base plate
- Additional corrosion protection for buried parts
- The screened separable cable connections are connected by coupling pieces which are mounted in the enclosure
- When branching parallel connector PC630 is required
- Any chosen cable can be disconnected for live sectioning or to be earthed
- The cabinet is supplied with padlocks and shackles
- For three core cables, screen separation kits must be used
- The cable cabinet is supplied with 2 x 3 phase kits, separable connectors, capacitive test point included
- Enclosures meet the requirements of mechanical impact tests - IEC 60439-5
- Meets the requirements of electrical tests - SS424 14 45
- Cenelec: HD 629.1 S1

Part number	Voltage	Conductor Size
<b>HDC-A 12630-01</b>	12kV	25-70mm <sup>2</sup>
<b>HDC-A 12630-02</b>	12kV	95-300mm <sup>2</sup>
<b>HDC-A 12630-03</b>	12kV	400-630mm <sup>2</sup>
<b>HDC-A 24630-01</b>	24kV	25-70mm <sup>2</sup>
<b>HDC-A 24630-02</b>	24kV	95-300mm <sup>2</sup>

Part number	Voltage	Conductor Size
<b>HDC-A 24630-03</b>	24kV	400-630mm <sup>2</sup>
<b>HDC-A 36630-01</b>	36kV	50-70mm <sup>2</sup>
<b>HDC-A 36630-02</b>	36kV	95-300mm <sup>2</sup>
<b>HDC-A 36630-03</b>	36kV	400-630mm <sup>2</sup>

Part number	Description
<b>PSSK 1</b>	Screen Separation kit (25-70mm <sup>2</sup> 11kV, 25-35mm <sup>2</sup> 24kV)
<b>PSSK 2</b>	Screen Separation kit (95-300mm <sup>2</sup> 11kV, 50-300mm <sup>2</sup> 24kV)
<b>PC 630/250</b>	Parallel Connector

Part number	Description
<b>IP 250</b>	Screened Insulation Plug
<b>MA 250</b>	Measurement Adaptor
<b>KA 250</b>	Transversal Anchor Bar
<b>UKRA 90</b>	Clamp for Fixing Cables

## Pfisterer Connex Cable Termination System

### FEATURES

- The "Plug In" connector employs an insulated silicone bushing to control the electrical field present when the cable screen is removed
- Heat shrinkable sleeve provides a moisture barrier between the cable sheath and the alloy housing of the connector
- The termination is completed by plugging into the equipment and taking the cable screen to earth
- Sold in sets of three phases
- Installation tooling available to buy or hire
- Training courses available
- Designed to meet the requirements of EN 50180, 50181, DIN 47637 and are suitable for all cables to IEC 502 with graphite coated, bonded or "Easy Peel" semi-conducting screens
- System can be buried and utilised off shore (Special variant required)
- Suitable for Class 5 cores, 3 core cables, armoured cables



**Connex Plug in System for size 0, 1, 2, 3, 3S, 4, 5S, 6 & 6S**

Cone Size	Part number	Max Voltage	Max Current	Cross Section	Dia Core Insulation	Voltage Tap
SIZE 0	870-01X-XXX	12kV	250A	25 - 70mm <sup>2</sup>	12.7mm - 23.5mm	NO
SIZE 0	870-02X-XXX	24kV	250A	25 - 70mm <sup>2</sup>	12.7mm - 23.5mm	NO
SIZE 1	870-11X-XXX	12kV	630A	25 - 240mm <sup>2</sup>	13.5mm - 36.0mm	NO
SIZE 1	870-12X-XXX	24kV	630A	25 - 240mm <sup>2</sup>	13.5mm - 36.0mm	NO
SIZE 1	870-13X-XXX	36kV	630A	25 - 240mm <sup>2</sup>	13.5mm - 36.0mm	NO
SIZE 1	850-11X-XXX	12kV	630A	25 - 240mm <sup>2</sup>	13.5mm - 31.5mm	YES
SIZE 1	850-12X-XXX	24kV	630A	25 - 240mm <sup>2</sup>	13.5mm - 31.5mm	YES
SIZE 1	850-13X-XXX	36kV	630A	25 - 240mm <sup>2</sup>	13.5mm - 31.5mm	YES
SIZE 2	870-21X-XXX	12kV	800A	25 - 400mm <sup>2</sup>	13.5mm - 44.0mm	NO
SIZE 2	870-22X-XXX	24kV	800A	25 - 400mm <sup>2</sup>	13.5mm - 44.0mm	NO
SIZE 2	870-23X-XXX	42kV	800A	25 - 400mm <sup>2</sup>	13.5mm - 44.0mm	NO
SIZE 2	850-21X-XXX	12kV	800A	25 - 400mm <sup>2</sup>	13.5mm - 36.0mm	YES
SIZE 2	850-22X-XXX	24kV	800A	25 - 400mm <sup>2</sup>	13.5mm - 36.0mm	YES
SIZE 2	850-23X-XXX	42kV	800A	25 - 400mm <sup>2</sup>	13.5mm - 36.0mm	YES
SIZE 3	870-31X-XXX	12kV	1250A	35 - 800mm <sup>2</sup>	15.5mm - 46.0mm	NO
SIZE 3	870-32X-XXX	24kV	1250A	35 - 800mm <sup>2</sup>	15.5mm - 46.0mm	NO
SIZE 3	870-33X-XXX	42kV	1250A	35 - 800mm <sup>2</sup>	15.5mm - 46.0mm	NO
SIZE 3	850-31X-XXX	12kV	1250A	35 - 800mm <sup>2</sup>	15.5mm - 46.0mm	YES
SIZE 3	850-32X-XXX	24kV	1250A	35 - 800mm <sup>2</sup>	15.5mm - 46.0mm	YES
SIZE 3	870-33X-XXX	42kV	1250A	35 - 800mm <sup>2</sup>	15.5mm - 46.0mm	YES
SIZE 3S	850-350-XXX	52kV	1250A	35 - 800mm <sup>2</sup>	15.5mm - 55.0mm	NO
SIZE 3XL	870-335-XXX	42kV	1250A	240 - 800mm <sup>2</sup>	46.0mm - 55.0mm	NO

Part number	Description	Info	For use with cone size
827-150-005	Dummy Cable Connector	For Sealing And Voltage Proof Closing Of Connex Connectors	Size 0
827-150-002	Dummy Cable Connector	For Sealing And Voltage Proof Closing Of Connex Connectors	Size 1
827-150-003	Dummy Cable Connector	For Sealing And Voltage Proof Closing Of Connex Connectors	Size 2
827-150-004	Dummy Cable Connector	For Sealing And Voltage Proof Closing Of Connex Connectors	Size 3
827-134-004	Protecting Cap	For Protecting Withdrawn Connex Connectors Against Dirt	Size 0
827-134-001	Protecting Cap	For Protecting Withdrawn Connex Connectors Against Dirt	Size 1
827-134-002	Protecting Cap	For Protecting Withdrawn Connex Connectors Against Dirt	Size 2
827-134-003	Protecting Cap	For Protecting Withdrawn Connex Connectors Against Dirt	Size 3

### APED 36 P Composite and APED 52 Porcelain Termination

#### FEATURES

- Designed to terminate 52kV single core XLPE cables where the termination is to be used as fixed connection point and for installations where there is a risk of very high continuous creepage currents
- Can be assembled horizontally on the ground before installation
- Will cater for cable sizes from 95-1200mm<sup>2</sup>
- The composite termination is lightweight and shatter resistant
- The termination consists of porcelain or composite insulator installed on a box body made of aluminium casting

Part number	Insulator	Cable Size	Core Insulation Diameter	Voltage
APED36P	Composite	95-1200mm <sup>2</sup>	25-66mm	36kV
APED52B	Porcelain	95-1200mm <sup>2</sup>	25-66mm	52kV

#### 1. Top Bolt

Bolt connection technology. Made from aluminium or tin plated copper.

#### 2. Top Cover

Made from aluminium alloy, fastened with bolt and ring halves, and sealed with O-rings.

#### 3. Insulator

Grey composite or brown porcelain insulator. The composite insulator with silicone rubber has a low weight and the silicone rubber has a naturally hydrophobic surface which decreases the risk of leakage currents.

#### 4. Filling Compound

Polybutene oil, volume is 2 litres.

#### 5. Stress relief cone

The stress relief cone is made from EPDM and designed for geometric field control.

#### 6. Box Body

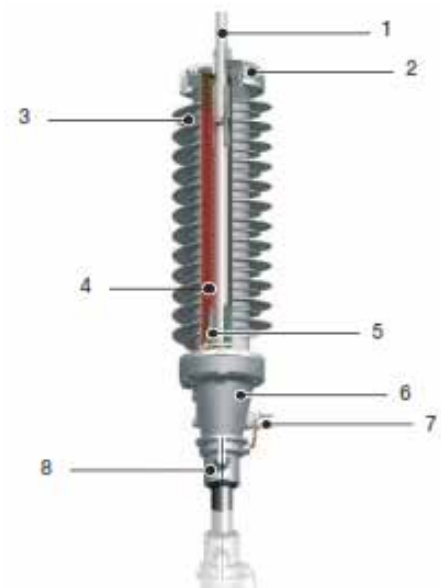
Robust aluminium construction with individual clamps or bolts to secure the insulator. Sealed with an O-ring.

#### 7. Earth Clamp

The earth clamp is made from nickel-plated brass and clamped with stainless steel bolts. The earth clamp has a rated cross section of 300mm<sup>2</sup>.

#### 8. Cable Clamp

Made from aluminium alloy. The clamp secures the cable in a fixed position.



#### Main Technical Data

Electrical data, IEC standard 60840	Voltage kV	
Highest voltage for equipment, U <sub>2</sub>	36	52
Rate voltage, U	30-33	45-47
Value of U <sub>2</sub> for determination of test V	21	26
Heating cycle voltage test, 2U <sub>2</sub>	36	52
Partial discharges test <5pC, 1.5U <sub>2</sub>	27	39
Switching impulse voltage test	NA	NA
Lighting impulse voltage test, BIL	±170	±250
AC voltage test, 2.5U <sub>2</sub>	57	65
Measurement of loss factor, U <sub>2</sub>	21	26

### OHVT Heat Shrink Terminations for XLPE CWS cables

#### FEATURES

- TE Connectivity outdoor termination for trackside applications.
- Supplied without a lug
- Compact and modular design
- Water and corrosion resistant
- Different creepage distances available
- Full PADS approval
- Suitable for crimp or mechanical lugs
- Unlimited shelf life under normal storage conditions
- Tested in accordance to IEEE 48 and IEC 60840
- Manufactured according to ISO 9001 and ISO14001



**OHVT Heat Shrink Termination**

Part number	Cable Size	Diameter Over Insulation	Termination Length	Creepage Distance	Number of Sheds
<b>OHVT-5212</b>	95-300mm <sup>2</sup>	30-45mm	850mm	1430mm	4
<b>OHVT-5213</b>	240-630mm <sup>2</sup>	38-55mm	850mm	1430mm	4

### 95-EB and 95-EP Cold Shrink Terminations for XLPE CWS cables

#### FEATURES

- The versatile design of the prefabricated one-piece cold shrink termination body allows installation on a wide range of cable sizes and types.
- No heat or flame is needed during installation
- No special tools needed during installation
- Suitable for crimp and mechanical lugs
- Full PADS approval
- Shelf life of QT111 series terminations is specified as three years
- Terminations meet and exceed European standard IEC60840



**Cold Shrink Terminations for XLPE CWS cables**

Part number	Cable Size	Diameter Over Insulation	Maximum Diameter Over Lug	Part number	Cable Size	Diameter Over Insulation	Maximum Diameter Over Lug
<b>95-EB62-2</b>	70-400mm <sup>2</sup>	33.0-53.0mm	53mm	<b>95-EP631-2</b>	240-400mm <sup>2</sup>	38.6-51.0mm	51mm

## Renewables | A brighter future

**Jointing Tech is a specialist electrical distributor supplying a full range of power cable and accessories into the renewable energy sector.**

**The Jointing Tech range includes:**


- Distribution Transformers
- Switchgear
- LV Cabinets
- Earthing (inc HDC Cable)
- Troughing
- MV Joints
- MV Terminations
- HV Joints
- HV Terminations
- Insulation
- MV Power Cable
- DC Cable
- Earthing Design
- Lugs and Connectors
- Tool Hire and Sales

Generating electricity to power our homes and industry requires innovative technology based around proven products. Jointing Tech are the UK's prime distributor for the leading manufacturers within this vital market sector.

**[www.jointingtech.co.uk](http://www.jointingtech.co.uk)**



## Rail | A track record of success



**Jointing Tech is a specialist electrical distributor supplying a full range of power cable and accessories into the rail industry for substations, feeders, signalling power, civils & construction projects.**

**The Jointing Tech PADS approved range includes:**

- MV Terminations
- Insulation Products
- Power Cables
- Lugs and Connectors
- Cable Signalling Joints
- LV & MV Link Boxes
- MV Joints
- Earthing
- Tapes & Accessories
- Tool Hire & Sales
- Resin & Compounds
- Cable Troughing

In addition to supplying PADS approved products, Jointing Tech carries a multi-million pound inventory and delivers next day throughout the UK. Whatever your rail project needs, contact us today for project support!

**[www.jointingtech.co.uk](http://www.jointingtech.co.uk)**

# MV Joints

## Contents



11kV Resin Joints	<b>130</b>
11kV Heat Shrink Joints	<b>133</b>
11kV Heat Shrink/Cold Shrink Joints	<b>134</b>
33kV Heat Shrink Joints	<b>136</b>
33kV Heat Shrink/Cold Shrink Joints	<b>138</b>
33kV Cold Shrink Joints	<b>139</b>
52kV Heat Shrink/Cold Shrink Joints	<b>141</b>



This 'mini-catalogue' focusing on MV Joints is part of a larger, more comprehensive Power Cable Accessories Catalogue produced by Jointing Tech.

Please visit our website for more information and/or a copy of the full catalogue.

[www.jointingtech.co.uk](http://www.jointingtech.co.uk)



## Inline Universal Jointing System for XLPE/PILC/PICAS Three Core Cables

### FEATURES

- Designed to provide a universal system for three core 11kV inline and transition jointing of polymeric or paper cables in one kit.
- Highly reliable UK industry standard joint
- Proven in service with UK REC's since 1991
- 1402 FR resin can be added to this kit for petrochemical environments
- Kit includes: stress control tubes, mechanical connectors, insulating sleeves, armour continuity, plastic shell and two part LDPU resin
- Tested in accordance with CENELEC specification HD 629 or IEC 60502-4 for joints



**Shrinkset - Inline universal jointing system for any combination of three core XLPE/PILC/PICAS cables**

Part number	Conductor Size	To Suit	Resin Volume
<b>SHSS-12A-IND</b>	35-185mm <sup>2</sup> Poly - 70-185mm <sup>2</sup> Paper	-	14 litres
<b>SHSS-12B-IND</b>	185-300mm <sup>2</sup> Poly - 185-300mm <sup>2</sup> Paper	-	28 litres
<b>BU1 - SMOE 61745</b>	16-25mm <sup>2</sup> Poly - 16-50mm <sup>2</sup> Paper	Use with SHSS-12-A	-
<b>BU2 - SMOE 61760</b>	95-150mm <sup>2</sup> Poly - 95-150mm <sup>2</sup> Paper	Use with SHSS-12-B	-
<b>BU3 - SMOE 61798</b>	16-70mm <sup>2</sup> Poly - 16-70mm <sup>2</sup> Paper	Use with SHSS-12-B	-

## Inline Joints for Three Core Armoured XLPE/PILC/PICAS Cables

### FEATURES

- The versatile design of the prefabricated one-piece cold shrink splice body allows installation on a wide range of cable sizes and types and a fast and easy installation at temperatures ranging from -20 to +50°C
- No heat or flame needed during splice body installation
- Mechanical connectors provide quick and easy installation
- No special tools are needed during splice installation
- Thick walled EPDM rubber cold shrink outer re-jacketing tubes provide mechanical protection and moisture sealing of the completed inline joints
- Outer protection using Scotchcast resin provides options to install in zones 1 and 2 hazardous areas, as well as protection for PILC/PICAS cables
- Different sized cables can be joined using build up kits



**Cold Shrink joint to join any combination of three core cables**

Part number	Joint Type	Outer Protection	Conductor Size
<b>92-AV610-3/C</b>	XLPE Straight	See below	50-120mm <sup>2</sup>
<b>92-AV620-3/C</b>	XLPE Straight	See below	150-240mm <sup>2</sup>
<b>92-AV630-3/C</b>	XLPE Straight	See below	240-400mm <sup>2</sup>
<b>92-AV610-3/C+1 x PILC1</b>	XLPE to PILC/PICAS	See below	50-120mm <sup>2</sup>
<b>92-AV620-3/C+1 x PILC2</b>	XLPE to PILC/PICAS	See below	150-240mm <sup>2</sup>
<b>92-AV630-3/C+1 x PILC3</b>	XLPE to PILC/PICAS	See below	240-400mm <sup>2</sup>
<b>92-AV610-3/C+2 x PILC1</b>	PILC/PICAS Straight Joint	See below	50-120mm <sup>2</sup>
<b>92-AV620-3/C+2 x PILC2</b>	PILC/PICAS Straight Joint	See below	150-240mm <sup>2</sup>
<b>92-AV630-3/C+2 x PILC3</b>	PILC/PICAS Straight Joint	See below	240-400mm <sup>2</sup>

### Outer Protection Sleeve/Shell

Part number	Protection Type	To Suit	Resin Volume
<b>CS610-3</b>	Cold Shrink Tube	92-AV610-3/C	-
<b>CS620-3</b>	Cold Shrink Tube	92-AV620-3/C	-
<b>CS630-3</b>	Cold Shrink Tube	92-AV630-3/C	-
<b>1451</b>	Moulded Shell	92-AV610-3/C & 92-AV620-3/C	14 litres
<b>1452</b>	Moulded Shell	92-AV630-3/C	21 litres

## Branch/Pot End Universal Jointing System for XLPE/PILC/PICAS Three Core Cables



**Shrinkset - Branch universal jointing system for any combination of three core XLPE/PILC/PICAS cables**

### FEATURES

- Designed to provide a universal system for three core 11kV branch jointing of polymeric or paper cables in one kit
- 1402 FR resin can be added to this kit for petrochemical environments
- Kit includes: stress control tubes, mechanical connectors, insulating sleeves, armour continuity and plastic shell
- Two part LDPU resin available for purchase
- Tested in accordance with CENELEC specification HD 629.1 or IEC 60502-4 for joints
- Proven and in service with UK electricity boards since 1991
- Build up kits can be used for smaller conductor sizes and large size transitions
- Approved to electricity association specification ER C90

Part number	Conductor Size	To Suit	Resin Volume
<b>SMOE61987 (branch joint)</b>	35-185mm <sup>2</sup> Poly - 95-185mm <sup>2</sup> Paper	-	42 litres
<b>SMOE61988 (branch joint)</b>	185-300mm <sup>2</sup> Poly - 185-300mm <sup>2</sup> Paper	-	49 litres
<b>SMOE62668 (pot end)</b>	95-300mm <sup>2</sup>		14 litres
<b>BU1 - SMOE 61745</b>	16-25mm <sup>2</sup> Poly - 16-50mm <sup>2</sup> Paper	SMOE61987/SMOE62668	-
<b>BU2 - SMOE 61760</b>	95-150mm <sup>2</sup> Poly - 95-150mm <sup>2</sup> Paper	SMOE61988	-
<b>BU3 - SMOE 61798</b>	16-70mm <sup>2</sup> Poly - 16-70mm <sup>2</sup> Paper	SMOE61988/SMOE62668	-

## Trifurcating Joint



**Trifurcating joint for three core XLPE to 3 x single core XLPE**

### FEATURES

- Designed to join three core XLPE/CTS/SWA to 3 x single core XLPE CWS unarmoured cables
- A resin filled joint for extra mechanical protection
- Will cover cables from 70-300mm<sup>2</sup>
- Kits consists of all tubing, earth kits, connector and shell

Part number	Cable Size
<b>SMOE63180</b>	70-185mm <sup>2</sup>

Part number	Cable Size
<b>SMOE63181</b>	185-300mm <sup>2</sup>

## Trifurcating Transition Joint



**Trif/Trans joint for three core PILC/PICAS to 3 x single core XLPE CWS unarmoured cables**

### FEATURES

- Designed to join 3core PILC/PICAS/SWA to 3 x 1c XLPE CWS unarmoured cables
- A resin filled joint for extra mechanical protection
- Will cover cables from 70-300mm<sup>2</sup>
- Kits consists of all tubing, earth kits, connector and shell

Part number	Cable Size
<b>SMOE63410</b>	70-185mm <sup>2</sup>

Part number	Cable Size
<b>SMOE63411</b>	185-300mm <sup>2</sup>

## Lovisil Silicon Filled Resin Joints

### FEATURES

- Lovisil cable joints are suitable for use on paper-insulated (PILC or PICAS) and polymeric (XLPE or EPR) cables
- The electrical insulation is inside a polyester inner joint provided by the combination of polymeric tube set (primary insulation) and high grade silicon based compound
- Mechanical protection is provided by a ABS outer joint shell filled with a two-part polyurethane resin
- When the silicon comes into contact with water it reacts to form a soft and perfectly insulating rubber, this creates a seal that prevents any further ingress of moisture
- Suitable for all types of connectors, both mechanical and crimp can be used up to 24kV
- Joints also available in single cores, branch and loop formations
- Kit consists of base module, cable modules, resin and connectors

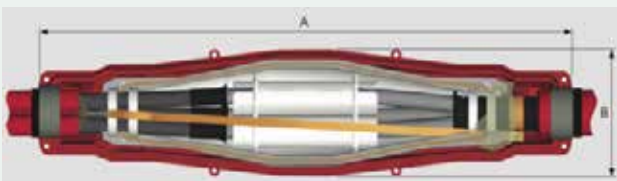


Part number	Description
<b>MJ-LOV-A-TX</b>	95mm <sup>2</sup> Triplex Straight Joint (all in 1 shell)
<b>MJ-LOV-A-TX</b>	185mm <sup>2</sup> Triplex Straight Joint (all in 1 shell)
<b>MJ-LOV-B-TX</b>	300mm <sup>2</sup> Triplex Straight Joint (all in 1 shell)
<b>MJ-LOV-A-TX-XU</b>	95mm <sup>2</sup> Triplex to 95mm <sup>2</sup> 3c XLPE collective CWS
<b>MJ-LOV-A-TX-XU</b>	185mm <sup>2</sup> Triplex to 185mm <sup>2</sup> 3c XLPE collective CWS
<b>MJ-LOV-B-TX-XU</b>	300mm <sup>2</sup> Triplex to 300mm <sup>2</sup> 3c XLPE collective CWS
<b>MJ-LOV-A-TX-XU</b>	95mm <sup>2</sup> Triplex to 185mm <sup>2</sup> 3c XLPE collective CWS
<b>MJ-LOV-A/B-TX-XU</b>	95mm <sup>2</sup> Triplex to 300mm <sup>2</sup> 3c XLPE collective CWS
<b>MJ-LOV-A/B-TX-XU</b>	185mm <sup>2</sup> Triplex to 300mm <sup>2</sup> 3c XLPE collective CWS

Part number	Description
<b>MJ-LOV-A-TX-XA</b>	95mm <sup>2</sup> Triplex to 95mm <sup>2</sup> 3c XLPE/CTS/SWA
<b>MJ-LOV-A-TX-XA</b>	185mm <sup>2</sup> Triplex to 185mm <sup>2</sup> 3c XLPE/CTS/SWA
<b>MJ-LOV-B-TX-XA</b>	300mm <sup>2</sup> Triplex to 300mm <sup>2</sup> 3c XLPE/CTS/SWA
<b>MJ-LOV-A-TX-XA</b>	95mm <sup>2</sup> Triplex to 185mm <sup>2</sup> 3c XLPE/CTS/SWA
<b>MJ-LOV-A/B-TX-XA</b>	95mm <sup>2</sup> Triplex to 300mm <sup>2</sup> 3c XLPE/CTS/SWA
<b>MJ-LOV-A/B-TX-XA</b>	185mm <sup>2</sup> Triplex to 300mm <sup>2</sup> 3c XLPE/CTS/SWA
<b>MJ-LOV-A-TX-PI</b>	95mm <sup>2</sup> Triplex to 95mm <sup>2</sup> 3c PILC/SWA or PICAS
<b>MJ-LOV-A-TX-PI</b>	185mm <sup>2</sup> Triplex to 185mm <sup>2</sup> 3c PILC/SWA or PICAS
<b>MJ-LOV-B-TX-PI</b>	300mm <sup>2</sup> Triplex to 300mm <sup>2</sup> 3c PILC/SWA or PICAS

All above complete with resin and connectors

### Resin Joint Details



Part Number	Dimensions	
	A (mm)	B (mm)
MJ-LOV-A	1055	226.5
MJ-LOV-A	1343	267
MJ-LOV-A	1343	267

## Inline Joints for Single Core Unarmoured XLPE Cables c/w Mechanical Connectors



### Inline heat shrink joints for single core unarmoured XLPE cables

#### FEATURES

- Designed to join inline single core 11kV unarmoured XLPE cables
- Highly reliable UK industry standard joint
- Unlimited shelf life
- Kit contents: Stress control and insulation tubing, wire shield, outer Heat Shrink sleeving, mechanical connectors, void, stress and moisture tapes
- Tested in accordance with CENELEC specification HD 629.1 or IEC 60502-4 for joints
- Network Rail Approved

Part number	Conductor Size
<b>MXSU-3111</b>	25-95mm <sup>2</sup>
<b>MXSU-3121</b>	70-150mm <sup>2</sup>
<b>MXSU-3131</b>	95-240mm <sup>2</sup>
<b>MXSU-3141</b>	240-400mm <sup>2</sup>

Part number	Conductor Size
<b>MXSU-3151</b>	500mm <sup>2</sup>
<b>MXSU-3161</b>	630mm <sup>2</sup>
<b>MXSU-3171</b>	800mm <sup>2</sup>
<b>MXSU-3181</b>	1000mm <sup>2</sup>

## Size Transition Joints for Single Core Unarmoured XLPE Cables Heat Shrink Mechanical Connectors



### Inline heat shrink size transition joints for single core unarmoured XLPE cables

#### FEATURES

- Designed to join 11kV single core cables with large size transitions
- Unlimited shelf life
- Tested in accordance with CENELEC specification
- Kit contents: Stress control and insulation tubing, wire shield, outer Heat Shrink sleeving, mechanical connectors, void, stress and moisture tapes
- Unlimited shelf life
- Tested in accordance with CENELEC specification HD 629.1 or IEC 60502-4 for joints

Part number	Conductor Size
<b>MXSU-3131-T2</b>	25-95mm <sup>2</sup> - 95-240mm <sup>2</sup>
<b>MXSU-3141-T2</b>	95-240mm <sup>2</sup> - 185-400mm <sup>2</sup>
<b>MXSU-3151-T6</b>	185-400mm <sup>2</sup> - 500mm <sup>2</sup>

Part number	Conductor Size
<b>MXSU-3161-T7</b>	185-400mm <sup>2</sup> - 630mm <sup>2</sup>
<b>MXSU-3181-T8</b>	630mm - 1000mm <sup>2</sup>

## Inline Joints for Single Core Unarmoured XLPE Cables



### Inline heat shrink joints for single core unarmoured XLPE cables

#### FEATURES

- Designed to join inline single core 11kV unarmoured XLPE cables
- Highly reliable UK industry standard joint
- Can be used with crimp and mechanical connectors
- Kit contents: Stress control and insulation tubing, wire shield, outer heat shrink sleeving, void, stress and moisture tapes
- Tested in accordance with CENELEC specification HD 629.1 or IEC 60502-4 for joints
- Network Rail Approved

Part number	Conductor Size
<b>SXSU-3111</b>	35-70mm <sup>2</sup>
<b>SXSU-3121</b>	95-185mm <sup>2</sup>

Part number	Conductor Size
<b>SXSU-3131</b>	185-300mm <sup>2</sup>
<b>SXSU-3141</b>	300-500mm <sup>2</sup>

## Inline Joints for 11kV Single Core Unarmoured XLPE Cables c/w Mechanical Connectors

### FEATURES

- Designed to join inline single core 11kV unarmoured XLPE cable in "All in One" kit including mechanical connector
- Joint body, earthing system and re-jacketing pre-expanded on one holdout system
- Single piece silicone rubber joint body with high mechanical expansion capability allows a wide application range which enables smaller range of product to be stocked
- Short parking distance required
- Electrical stress control of the screen cut area by integrated conductive geometrical stress cones
- Electrical stress control of the connector is by an integrated screened connection area (Faraday Cage)
- Kit contents: Stress control and insulation tubing, wire shield, outer cold shrink sleeving, void, stress and moisture tapes
- For use on solid conductors please contact your nearest sales office
- Joint exceeds CENELEC HD 629.1 which includes IEC, BS, VDE and other international specifications
- Network Rail approved



**Inline cold shrink joints for 11kV single core unarmoured XLPE cables**

Part number	Application Range	Diameter over core insulation	Diameter over outer sheath
<b>CSJA-12B/1XU-1XU-M</b>	95-240mm <sup>2</sup>	18.6-28.4mm	26.0-39.0mm
<b>CSJA-12C/1XU-1XU-M</b>	185-300mm <sup>2</sup>	23.2-32.6mm	30.0-44.0mm
<b>CSJA-12D/1XU-1XU-M</b>	240-400mm <sup>2</sup>	25.7-33.6mm	33.0-45.0mm
<b>CSJA-12E/1XU-1XU-M1</b>	500mm <sup>2</sup>	34.4-36.2mm	43.0-48.0mm
<b>CSJA-12E/1XU-1XU-M2</b>	630mm <sup>2</sup>	38.0-40.0mm	47.0-52.0mm

## Cold Shrink Single Core Inline Joint for XLPE CWS c/w Mechanical Connectors

### FEATURES

- Prefabrication one-piece cold shrink joint allows installation on a wide range of cable sizes
- No heat or flame is needed during splice body installation
- Joint comes complete with a mechanical connector
- EPDM thick wall outer jacket provides good mechanical protection



**Inline cold shrink joints for 11kV single core unarmoured XLPE cables**

Part number	Conductor Size	Part number	Conductor Size
<b>92-AK610-I/C</b>	50-150mm <sup>2</sup>	<b>92-AK630-I/C</b>	300-630mm <sup>2</sup>
<b>92-AK620-I/C</b>	95-300mm <sup>2</sup>	<b>92-AK632-I/C</b>	800-1000mm <sup>2</sup>

## Inline Joints for Single Core Aluminium Wire Armoured XLPE Cables

### FEATURES

- Designed to join inline single core 11kV aluminium wire armoured XLPE cables.
- Highly reliable UK industry standard joint.
- Kit contents: Stress control and insulation tubing, wire shield, outer heat shrink sleeving, void, stress and moisture tapes
- Tested in accordance with CENELEC specification HD 629.1 or IEC 60502-4 for joints



**Inline heat shrink joints for single core aluminium wire armoured XLPE cables**

Part number	Conductor Size	Part number	Conductor Size
<b>SXAW-3121</b>	95-185mm <sup>2</sup>	<b>SXAW-3141</b>	400-500mm <sup>2</sup>
<b>SXAW-3131</b>	185-300mm <sup>2</sup>	<b>SXAW-3151</b>	630-800mm <sup>2</sup>

## Cold Shrink Single Core Inline Joint for XLPE/CTS/AWA c/w Mechanical Connectors



**Single core cold shrink straight joint for armoured cables**

### FEATURES

- Prefabrication one-piece cold shrink joint allows installation on a wide range of cable sizes
- No heat or flame is needed during splice body installation
- Joint comes complete with a mechanical connector
- EPDM thick wall outer jacket provides good mechanical protection

Part number	Conductor Size
92-AK612-1/C	70-150mm <sup>2</sup>
92-AK622-1/C	150-240mm <sup>2</sup>

Part number	Conductor Size
92-AK623-1/C	300-400mm <sup>2</sup>
92-AK633-1/C	500-630mm <sup>2</sup>

## MXSB Branch Joint Range c/w Mechanical Connectors



**Single core heat shrink branch joint for unarmoured cables**

### FEATURES

- Heat Shrink branch joint for XLPE CWS cables c/w mechanical connector
- The design of the connector enables the user to connect different size conductors
- Immediate service after installation
- The complete kit has been tested to meet Raychem performance standards according to CENELEC HD629.1S2

Part number	Conductor Size
MXSB-12A-1XU-2XU	35-95mm <sup>2</sup>
MXSB-12B-1XU-2XU	70-185mm <sup>2</sup>

Part number	Conductor Size
MXSB-12C-1XU-2XU	150-300mm <sup>2</sup>

## MXSW 3 Core XLPE SWA Range of Joints c/w Mechanical Connectors



**Three core heat shrink joint XLPE armoured cables**

### FEATURES

- Designed to joint three core XLPE/CTS/SWA cables
- The design of the connector enables the user to connect different size conductors
- Immediate service after installation
- The complete kit has been tested to meet Raychem's performance standards according to CENELEC HD629.1S2

Part number	Conductor Size
MXSW-3311-GB01	35-95mm <sup>2</sup>
MXSW-3331	95-240mm <sup>2</sup>

Part number	Conductor Size
MXSW-3332	150-300mm <sup>2</sup>

## Heat Shrink Single Core Inline Joint for PILC Cables

### FEATURES

- Designed to join inline single core 33kV PILC cables
- Highly reliable UK industry standard joint
- Unlimited shelf life
- Kit contents: Void filling tapes, stress control and insulation tubing, wire armour continuity, outer sealing sleeves
- Tested in accordance with CENELEC specification HD 629.1 or IEC 60502-4 for joints



**Heat shrink straight joint for 33kV paper insulated lead covered cables**

Part number	Conductor Size
EPKJ 36A-1HL-1HL	50-70mm <sup>2</sup>
EPKJ 36B-1HL-1HL	95-150mm <sup>2</sup>

Part number	Conductor Size
EPKJ 36C-1HL-1HL	185-400mm <sup>2</sup>
EPKJ 36D-1HL-1HL	500-630mm <sup>2</sup>

## Transition Joints for Single Core XLPE to PILC Cable

### FEATURES

- Designed to join inline single core 33kV XLPE to PILC cables
- Highly reliable UK industry standard joint
- Unlimited shelf life
- Kit contents: Void filling tapes, stress control and insulating tubing, outer sealing sleeve
- Tested in accordance with CENELEC specification HD 629.1 or IEC 60502-4 for joints
- Network Rail Approved



**Heat shrink transition joints for single core XLPE to PILC cables**

Part number	Conductor Size
EPKJ 36A-1XU-1HL	50-70mm <sup>2</sup>
EPKJ 36B-1XU-1HL	95-150mm <sup>2</sup>

Part number	Conductor Size
EPKT 36C-1XU-1HL	185-400mm <sup>2</sup>
EPKJ 36D-1XU-1HL	500-630mm <sup>2</sup>

## Inline Joints for Three Core Screened XLPE Cables

### FEATURES

- Designed to join inline three core screened 33kV XLPE cables
- Highly reliable UK industry standard joint
- Unlimited shelf life
- Kit contents: Void filling tapes, stress control and insulating tubings, wire armour continuity, outer sealing sleeves
- Tested in accordance with CENELEC specification HD 629.1 or IEC 60502-4 for joints



**Heat shrink inline joints for three core steel wire armoured cables**

Part number	Conductor Size
EPKJ 36A-3XU-3XU-W	50-70mm <sup>2</sup>
EPKJ 36B-3XU-3XU-W	95-150mm <sup>2</sup>

Part number	Conductor Size
EPKJ 36C-3XU-3XU-W	185-400mm <sup>2</sup>



### Inline Joints for Single Core Unarmoured XLPE Cables c/w Mechanical Connectors



**Inline heat shrink joints for single core unarmoured XLPE cables, connectors inc**

#### FEATURES

- Designed to join inline single core 33kV unarmoured XLPE cables
- Kit contents: Stress control and insulation tubing, wire shield, outer Heat Shrink sleeving, mechanical connectors, void, stress and moisture tapes
- Tested in accordance with CENELEC specification HD 629 or IEC 60502-4 for joints
- Network Rail Approved

Part number	Conductor Size
<b>MXSU-6111</b>	35-95mm <sup>2</sup>
<b>MXSU-6121</b>	70-150mm <sup>2</sup>
<b>MXSU-6131</b>	150-300mm <sup>2</sup>
<b>MXSU-6141</b>	240-400mm <sup>2</sup>

Part number	Conductor Size
<b>MXSU-6151</b>	500mm <sup>2</sup>
<b>MXSU-6161</b>	630mm <sup>2</sup>
<b>MXSU-6171</b>	800mm <sup>2</sup>

### Size Transition Joints for Single Core Unarmoured XLPE Cables c/w Mechanical Connectors



**Inline heat shrink joints for single core unarmoured XLPE cables**

#### FEATURES

- Designed to join inline single core 33kV unarmoured XLPE cables
- Unlimited shelf life
- Kit contents: Stress control and insulation tubing, wire shield, outer Heat Shrink sleeving, mechanical connectors, void, stress and moisture tapes
- Tested in accordance with CENELEC specification HD 629.1 or IEC 60502-4 for joints

Part number	Conductor Size
<b>MXSU-6141-T4</b>	95-240mm <sup>2</sup> - 240-400mm <sup>2</sup>
<b>MXSU-6151-T6</b>	185-400mm <sup>2</sup> - 500mm <sup>2</sup>
<b>MXSU-6161-T6</b>	185-400mm <sup>2</sup> - 630mm <sup>2</sup>

Part number	Conductor Size
<b>MXSU-6161-T7</b>	500mm - 630mm <sup>2</sup>
<b>MXSU-6171-T8</b>	630mm <sup>2</sup> - 800mm <sup>2</sup>
<b>MXSU-6181-T8</b>	630mm - 1000mm <sup>2</sup>

### Inline Joints for Single Core Unarmoured XLPE Cables



**Inline heat shrink joints for single core unarmoured XLPE cables**

#### FEATURES

- Designed to join inline single core 33kV unarmoured XLPE cables
- Highly reliable UK industry standard joint
- Mechanical or crimp connectors available on request
- Unlimited shelf life
- Kit contents: Stress control and insulation tubing, wire shield, outer Heat Shrink sleeving, void, stress and moisture tapes
- Tested in accordance with CENELEC specification HD 629.1 or IEC 60502-4 for joints
- Network Rail Approved

Part number	Conductor Size
<b>SXSU-6122</b>	35-150mm <sup>2</sup>
<b>SXSU-6132</b>	150-300mm <sup>2</sup>
<b>SXSU-6141</b>	185-400mm <sup>2</sup>

Part number	Conductor Size
<b>SXSU-6142</b>	400-630mm <sup>2</sup>
<b>SXSU-6151</b>	500-800mm <sup>2</sup>
<b>SXSU-6161</b>	800-1200mm <sup>2</sup>

## Inline Joints for Single Core Aluminium Wire Armoured XLPE Cables

### FEATURES

- Designed to join inline single core 33kV aluminium wire armoured XLPE cables
- Highly reliable UK industry standard joint
- Will accommodate a mechanical or crimp connector
- Can be used for a size transition joint with the aid of mechanical connectors
- Quick installation time
- No special tools required for installation
- Unlimited shelf life
- Kit contents: Void filling tapes, stress control and insulation tubing, wire armour continuity, inner and outer sealing sleeve
- Tested in accordance with CENELEC specification HD 629 or IEC 60502-4 for joints



**Inline heat shrink joints for single core aluminium wire armoured XLPE cables**

Partnumber	Conductor Size
<b>SXAW-6122</b>	50-95mm <sup>2</sup>
<b>SXAW-6132</b>	120-240mm <sup>2</sup>

Partnumber	Conductor Size
<b>SXAW-6142</b>	300-630mm <sup>2</sup>

## Inline Joints for Single Core Armoured XLPE Cables c/w Mechanical Connectors

### FEATURES

- The versatile design of the prefabricated one-piece cold shrink splice body allows installation on a wide range of cable sizes and types.
- No special tools are needed during joint installation
- Thick walled EPDM rubber outer jacket provides mechanical protection and moisture sealing of the complete inline joint
- Designed to join inline 33kV single core copper tape screened armoured XLPE cables
- Viable cost based alternative to heat shrink joints
- Low temperature tool free installation
- Faster installation time saving labour costs
- Use build up kit 94-PG-620-1 when primary insulation is smaller than 28.4mm
- Kit contents: splice body, EPDM outer sleeve, mastic, earthing kit and mechanical connectors
- Tested in accordance CENELEC specification HD629.1 which encompasses the BS, VDE etc.



**QS2000 series inline cold shrink joints for single core armoured XLPE cables**

Part number	Diameter over Primary Insulation	Conductor Size
<b>94-AP635-1/C</b>	28.4-42.0mm	120-240mm <sup>2</sup>
<b>94-AP636-1/C</b>	28.4-42.0mm	185-300mm <sup>2</sup>

Part number	Diameter over Primary Insulation	Conductor Size
<b>94-PG-620-1</b>	Smaller than 28.4mm over primary insulation	Build up kit

### Trifurcating Transition Joint for Single Core XLPE to Three Core PILC Cables c/w Mechanical Connectors



#### Cold shrink trifurcating transition joints for single core XLPE to three core PILC cables

##### FEATURES

- Designed to join inline 33kV single core XLPE to three core PILC cables
- Low temperature installation
- Faster installation time saving labour costs
- The versatile design of the prefabricated one-piece cold shrink splice body allows installation on a wide range of cable sizes and types.
- No heat or flame is needed during splice body installation
- Mechanical connector provides quick and easy connection with no special tooling
- Scotchcast resin packs can be used providing options to install in zones 1 and 2 hazardous areas
- Tool free installation
- Kit contents: Mould shell, splice body, EPDM tubes, earthing kit, mastics, Scotch™ 23 and mechanical connectors
- Tested in accordance CENELEC specification HD 629.1 which encompasses the BS, VDE etc.

Part number	Conductor Size	Resin Volume
<b>94-FP-435-3/C</b>	120-240mm <sup>2</sup>	20 litres

Part number	Conductor Size	Resin Volume
<b>94-FP-436-3/C</b>	185-400mm <sup>2</sup>	20 litres

### Transition Joint for Single Core XLPE to PILC Cables c/w Mechanical Connectors



#### Cold shrink transition joints for single core XLPE to PILC cables

##### FEATURES

- Designed to join inline 33kV single core copper wire XLPE to single core PILC cables
- Low temperature installation
- Faster installation time saving labour costs
- The versatile design of the prefabricated one-piece cold shrink splice body allows installation on a wide range of cable sizes and types.
- Mechanical connectors included in the joint allows quick and easy connection with no special tooling
- Solderless earth connection by means of copper stocking and constant force spring
- Tool free installation
- Kit contents: splice body, EPDM tubes, mastics, earthing kit, Scotch™ 13 tape and mechanical connector
- Tested in accordance CENELEC specification HD 629.1 which encompasses the BS, VDE etc.

Part number	Conductor Size
<b>94-FC630-1/C</b>	120-240mm <sup>2</sup>
<b>94-FC631-1/C</b>	185-300mm <sup>2</sup>

Part number	Conductor Size
<b>94-FC640-1/C</b>	400-630mm <sup>2</sup>

## Inline Joints for 33kV Single Core Unarmoured XLPE Cables c/w Mechanical Connectors

### FEATURES

- Designed to join inline single core 33kV unarmoured XLPE cable in "All in One" kit including mechanical connectors
- Faster installation time than heat shrink joints
- Joint body, earthing system and re-jacketing pre-expanded on one holdout system
- Single piece silicone rubber joint body with high mechanical expansion capability allows a wide application range which enables smaller range of product to be stocked
- Short parking distance required
- Electrical stress control of the screen cut area by integrated conductive geometrical stress cones
- Electrical stress control of the connector is by an integrated screened connection area (Faraday Cage)
- Kit contents: Stress control and insulation tubing, wire shield, outer cold shrink sleeving and moisture tapes
- For use on solid conductors please contact your nearest sales office
- Joint exceeds CENELEC HD 629.1 which includes IEC, BS, VDE and other international specifications
- Network Rail approved
- Mechanical Shear bolt connector to IEC 61238-1



**Inline cold shrink joints for 33kV single core unarmoured XLPE cables**

Part number	Application Range	Diameter over core insulation	Diameter over outer sheath
<b>CSJA-36D/1XU-1XU-M</b>	95-240mm <sup>2</sup>	27.8-37.6mm	35.0-48.0mm
<b>CSJA-36E/1XU-1XU-M1</b>	240-400mm <sup>2</sup>	34.9-42.8mm	42.0-54.0mm
<b>CSJA-36E/1XU-1XU-M2</b>	500mm <sup>2</sup>	42.6-45.6mm	51.0-57.0mm
<b>CSJA-36E/1XU-1XU-M3</b>	630mm <sup>2</sup>	45.8-49.2mm	56.0-61.0mm

## Cold Shrink Joint for 33kV Single Core Unarmoured XLPE Cables c/w Mechanical Connectors

### FEATURES

- QS2000 cold shrink series kit is designed for in line splicing up to 36kV Umax voltage class, single core polymeric power cable systems with copper wire screen
- The versatile design of the pre-fabricated one piece cold shrink splice body allows installations on a wide range of cable sizes and types and a fast and easy installation at temperatures ranging from -20° to +50°C
- No heat or flame needed during splice body installation
- Solderless earth connection by means of copper stocking and constant force springs
- Thick walled EPDM rubber cold shrink outer jacket tubes provide mechanical protection and moisture sealing of the complete inline joint
- Joints complete with mechanical connector for ease of installation
- No special tools are needed during splice installation
- Joint designed and tested to IEC60502-4



**Inline cold shrink joints for 33kV single core XLPE cables**

Part number	Conductor Size	Part number	Conductor Size
<b>94-AP630-1/C</b>	120-240mm <sup>2</sup>	<b>94-AP631-1/C</b>	185-400mm <sup>2</sup>



## Heat Shrink Inline Joints



### 52kV Heat Shrink Inline Joint

#### FEATURES

- Designed to join inline single core 52kV unarmoured cables
- Range taking design
- Unlimited shelf life
- Designed for use with mechanical connectors
- Kit includes: Stress control tubes, Insulating sleeves, mastics and outer protection sleeve
- Network Rail approved
- Available for size and insulation transition.
- Cable joints for cross bonding/shield break applications also available
- Tested to IEEE 404 1993, EDF HN-68-S-20, SEN 24 1434, ESI 09-16 & IEC840

Part number	Description	Cable size	Diameter over insulation
<b>EHVS-52H-1-W-1D</b>	25/44kV Poly/Poly Straight Joint, excluding connector	95-300mm <sup>2</sup>	30-45mm
<b>EHVS-52H-1-W-2D</b>	25/44kV Poly/Poly Straight Joint, excluding connector	300-630mm <sup>2</sup>	42-55mm

**Cable specification must be supplied with cable dimensions at time of order**



## Cold Shrink QS III Splicing Kit



### Cold Shrink QS III Splicing Kit

#### FEATURES

- Designed to join inline single core 52kV unarmoured cables
- No heat or flame is needed during installation
- Designed for use with mechanical connectors (included)
- One piece splice body
- Network Rail approved
- Tested to IEC60502-04

Partnumber	Description	Cable size	Diameter over insulation
<b>95-AC645-1-240/C</b>	25/44kV Poly/Poly Straight Joint, excluding connector	120-240mm <sup>2</sup>	31.5-53.8mm
<b>95-AC645-1-400/C</b>	25/44kV Poly/Poly Straight Joint, excluding connector	300-400mm <sup>2</sup>	31.5-53.8mm

**Cable specification must be supplied with cable dimensions at time of order**



# Jointing Tech

## Jointing Tech Branches:

### Woking

Unit 19  
Woking Business Park  
Albert Drive  
Woking  
GU21 5JY

Tel: 01483 747747

### Bristol

The Alpha Centre  
Armstrong Way  
Great Western Business Park  
Yate  
Bristol  
BS37 5NG

Tel: 01454 322555

### Norton Canes

Unit 15-16  
Bellsize Close  
Norton Canes  
Staffordshire  
WS11 9TQ

Tel: 01543 450555

## Quality and Industry Accreditation



## Jointing Tech Group:

### Langley Engineering Ltd

16 The Markham Centre  
Theale  
Reading  
Berkshire  
RG7 4PE

Tel: 0118 930 5990

### Jointing Tech – Trace Heating Department

Unit 4 Eversley Way  
Thorpe Industrial Estate  
Egham  
Surrey  
TW20 8RG

Tel: 01784 279005

Jointing Technologies is part of Toolout Limited.  
© Toolout Limited. All rights reserved.  
Registered in England. Company Number 2281668

[www.jointingtech.co.uk](http://www.jointingtech.co.uk)

