

## Energy Division

# End Terminations With In Line Palm For Copper Conductors Up To 36kV

### Application :

These end terminations are designed primarily for use on stranded copper conductors.

### Description :

These end terminations are composed of :

- Brass or Copper (Electro-Tin Plated) bodies.
- Brass multi-shear range taking bolts.

### Features and Benefits :

- Supplied with range taking bolts.
- Solid moisture block between palm and barrel.
- Smooth profile prevents damage to insulation or sealing sleeves.
- Allows close fitting insulation sleeves to pass over the lug during installation.
- All bolts use 19mm socket or spanner.

### Specification :

- Designed to meet BS4579 Part1.

### Short Description : VETYXX-ZZUTB

'Y' : Denotes the end termination body material

- B = Brass
- C = Copper (Electro-Tin Plated)

'XX' : Denotes end termination body bore diameter

'ZZ' : Denotes palm configuration

- -12 = Short palm with M12 clearance hole
- -16 = Short palm with M16 clearance hole
- -20 = Short palm with M20 clearance hole
- -OH = Overhead pattern
- -OH-SP = Overhead pattern with extra M12 clearance hole.

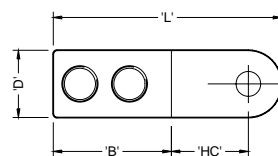
### Notes :

- Please contact your Tyco Electronics sales representative for pin type connectors & other connector ranges.
- The VETB version of these fittings may be used on aluminium conductors.
- Extra length bolts are available on request to facilitate use on smaller conductors.

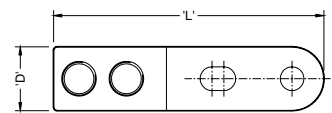
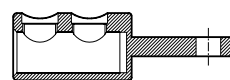
PN	TCPN	TEPN	Short Description	Circular Compacted Stranded Conductor Range (mm <sup>2</sup> )	
				Minimum	Maximum **
BAH-024030068	622942-000	6-1199670-6	VETB21-12UTB	95	240
BAH-024030070	253464-000	3-1199682-1	VETB21-16UTB	95	240
BAH-024030072	643724-000	8-1199669-9	VETB21-20UTB	95	240
BAH-024030183	CA2219-000	-	VETC21-16UTB	95	240
BAH-024030075	837660-000	8-1199692-1	VETB21-OHUTB	95	240
BAH-024030077	507868-000	7-1199675-8	VETB21-OHUTB-SP	95	240
BAH-024030083	124416-000	2-1199697-1	VETB28-12UTB	185	400
BAH-024030086	026394-000	2-1199703-6	VETB28-16UTB	185	400
BAH-024030088	336858-000	2-1199686-9	VETB28-20UTB	185	400
BAH-024030090	816510-000	2-1199695-9	VETB28-OHUTB	185	400
BAH-024030204	CB8555-000	-	VETB31-12UTB	400	500
BAH-024030208	CB8804-000	-	VETB31-16UTB	400	500
BAH-024030187	CA4453-000	-	VETB33-12UTB	400	630
BAH-024030189	CA4455-000	-	VETB33-16UTB	400	630
BAH-024030102	952966-000	7-1199688-7	VETC33-12UTB	400	630
BAH-024030104	575072-000	3-1199672-4	VETC33-16UTB	400	630
BAH-024030185	CA3389-000	-	VETB33-OHUTB	400	630
BAH-024030126	E22139-000	2-1200487-0	VETC33-OHUTB	400	630
BAH-024030191	CA4457-000	-	VETB37-16UTB	630	800
BAH-024030130	F61931-000	3-1200575-3	VETC37-12UTB	630	800
BAH-024030093	F43371-000	7-1200348-6	VETC37-16UTB	630	800
BAH-024030095	F14024-000	7-1200567-6	VETC37-20UTB	630	800
BAH-024030193	CA4459-000	-	VETB37-OHUTB	630	800
BAH-024030133	D54023-000	7-1200770-3	VETC37-OHUTB	630	800
BAH-024030214	CF4559-000	-	VETC44-16UTB	800	1000
BAH-024030225	CJ5243-000	-	VETC44-20UTB	800	1000

\*\* NOTE : Maximum conductor size may be larger than quoted above. Actual conductor size would need to be measured for fit against bore diameter quoted below.

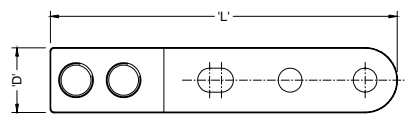
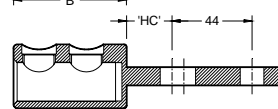
PN	End Termination Dimensions (mm)						
	L	B	ØD	HC	Bore Diameter	Bore Depth	Palm Hole Diameter
BAH-024030068	119.9	62	35	40.4	21.0	59.5	13.0
BAH-024030070	119.9	62	35	40.4	21.0	59.5	17.0
BAH-024030072	119.9	62	35	40.4	21.0	59.5	21.0
BAH-024030183	119.9	62	35	40.4	21.0	59.5	17.0
BAH-024030075	148.5	62	35	25	21.0	59.5	13.0
BAH-024030077	189.5	62	35	25	21.0	59.5	13.0
BAH-024030083	135.7	73	44.2	40.6	28.0	65.5	13.0
BAH-024030086	135.7	73	44.2	40.6	28.0	65.5	17.0
BAH-024030088	135.7	73	44.2	40.6	28.0	65.5	21.0
BAH-024030090	164	73	44.2	24.9	28.0	65.5	13.0
BAH-024030204	127	68.5	47	35	31.0	65.5	13.0
BAH-024030208	127	68.5	47	35	31.0	65.5	17.0
BAH-024030187	128	68.5	49	35	33.5	65.5	13.0
BAH-024030189	128	68.5	49	35	33.5	65.5	17.0
BAH-024030102	128	68.5	49	35	33.5	65.5	13.0
BAH-024030104	128	68.5	49	35	33.5	65.5	17.0
BAH-024030185	157.5	70	49	25	33.5	65.5	13.0
BAH-024030126	157.5	70	49	25	33.5	65.5	13.0
BAH-024030191	156	94	54	35	37.5	84.0	17.0
BAH-024030130	156	94	54	35	37.5	84.0	13.0
BAH-024030093	156	94	54	35	37.5	84.0	17.0
BAH-024030095	156	94	54	35	37.5	84.0	21.0
BAH-024030193	200	94	54	35	37.5	84.0	13.0
BAH-024030133	200	94	54	35	37.5	84.0	13.0
BAH-024030214	160.75	94	63.5	35	44.0	84.0	17.0
BAH-024030225	160.75	94	63.5	35	44.0	84.0	21.0



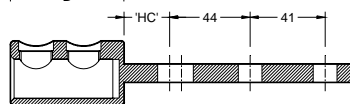
VETYXX-ZZUTB



VETYXX-OHUTB



VETB21-OHUTB-SP



All of the above information, including drawings, illustrations and graphic designs, reflects our present understanding and is to the best of our knowledge and belief correct and reliable. Users, however, should independently evaluate the suitability of each product for the desired application. Under no circumstances does this constitute an assurance of any particular quality or performance. Such an assurance is only provided in the context of our product specifications or explicit contractual Arrangements. Our liability for these products is set forth in our standard terms and conditions of sale. TE logo and Tyco Electronics are trademarks.

**Energy Division – economical solutions for the electrical power industry : cable accessories, connectors & fittings, electrical equipment, instruments, lighting controls, insulators & insulation enhancement and surge arresters.**

**Tyco Electronics UK Ltd**  
Energy Division  
Freebournes Road  
Witham, Essex CM8 3AH

Phone : +44 (0)870 870 7500  
Fax : +44 (0)870 240 5287

<http://energy.tycoelectronics.com>

**Energy Division**

© Tyco Electronics 2008

Page 2 of 2

Please dispose of all waste according to environmental regulations.



**Tyco Electronics**  
Our commitment. Your advantage.

Date : 23/09/2008  
 Revision : A  
 DATA SHEET  
 Number : BAH-0305