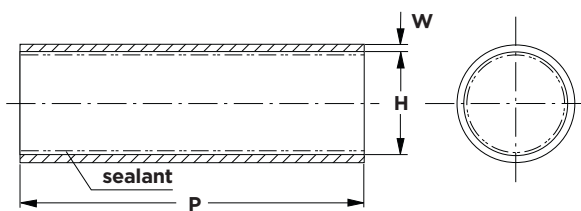


Material properties		Test method	Material requirements
Tensile strength		ISO 37	14 MPa min.
Ultimate elongation		ISO 37	350 % min.
Density		ISO 1183 Method A	0.9 - 1.1 g/cm ³
Hardness		ISO 868	50 shore D
Accelerated ageing	7 days at 150°C ± 2°C	ISO 188	
	Tensile strength	ISO 37	14 MPa min.
	Ultimate elongation	ISO 37	300 % min.
Thermal endurance*		IEC 60216	120°C min.
Low temperature flexibility	4 hrs at -40°C ± 3°C	ASTM D 2671 Procedure C	No cracking
Dielectric strength	1 mm wall	IEC 60243	200 kV/cm
Volume resistivity		IEC 60093	1 x 10 ¹² Ω cm min.
Water absorption		ISO 62 Method 1	0.25 % max after 14 days at 23°C ± 2°C
Resistance to liquids	7 days in transformer oil VDE 0370 at 23°C ± 2°C	ISO 1817	
	Tensile strength	ISO 37	14 MPa min.
	Ultimate elongation	ISO 37	300 % min.
Weathering		The material from which MWTM is manufactured contains carbon black to protect it from ultra-violet light.	
Additional properties		Further details are given in Raychem specification PPS 3010/19 (A) [1326].	

* based on ultimate elongation

Ordering information

Dimensions



Notes:

1. Dimensions in millimeters
a = as supplied
b = after free recovery

2. Max. longitudinal change
after free recovery:
+5% / -10%

Raychem tubing MWTM
is supplied complete with
installation instructions.

Product Size	Application range		H		W	
	from mm	to mm	a min	b max	a nom	b min
MWTM 10/3	3.5	9.0	10	3	0.3	1.0
MWTM 16/5	5.5	14.5	16	5	0.3	1.4
MWTM 25/8	9.0	22.5	25	8	0.4	2.0
MWTM 35/12	13.0	31.5	35	12	0.4	2.0
MWTM 50/16	18	45	50	16	0.5	2.0
MWTM 63/19	21	57	63	19	0.6	2.4
MWTM 75/22	24	68	75	22	0.6	2.7
MWTM 85/25	28	77	85	25	0.6	2.8
MWTM 95/29	32	86	95	29	0.7	3.1
MWTM 115/34	37	104	115	34	0.7	3.1
MWTM 140/42	46	126	140	42	0.7	3.1
MWTM 160/50	55	144	160	50	0.7	3.2
MWTM 180/60	66	162	180	60	0.7	3.2
MWTM 245/80 *	88	220	245	80	n.a.	2.4
MWTM 285/135 *	149	255	285	135	n.a.	1.4

* uncoated only

Standard lengths and coatings

Lengths

All sizes types are available in the
standard lengths: 1000 mm and
1500 mm.

Spools and other lengths on request.
All lengths subject to standard
cutting tolerances.

Coatings

Raychem tubing MWTM is available
with or without an inner sealant wall.
The sealant exhibits excellent bonding
and sealing characteristics to all materi-
als commonly used in the various cable
insulation and sheath constructions,
such as plastic, rubber, lead and
aluminium.
Sealant /S (equivalent /243 and S1323)
meets Raychem specification
PPS 3012/76

Ordering example

Part number
MWTM 25/8-1000/S

Product type _____
Size _____
Standard length _____
/S = sealant _____
/U = without sealant _____

While TE Connectivity (TE) has made every reasonable effort to ensure the accuracy of the information in this catalog, TE does not guarantee that it is error-free, nor does TE make any other representation, warranty or guarantee that the information is accurate, correct, reliable or current. TE reserves the right to make any adjustments to the information contained herein at any time without notice. TE expressly disclaims all implied warranties regarding the information contained herein, including, but not limited to, any implied warranties of merchantability or fitness for a particular purpose. The dimensions in this catalog are for reference purposes only and are subject to change without notice. Specifications are subject to change without notice. Consult TE for the latest dimensions and design specifications. Raychem, TE Connectivity and TE Connectivity (logo) are trademarks. Other logos, product and company names mentioned herein may be trademarks of their respective owners.

TE Energy – innovative and economical solutions for the electrical power industry: cable accessories, connectors & fittings, insulators & insulation, surge arresters, switching equipment, street lighting, power measurement and control.

Tyco Electronics Raychem GmbH
a TE Connectivity Ltd. Company
TE Energy
Finsinger Feld 1
85521 Ottobrunn/Munich, Germany

Phone: +49-89-6089-0
Fax: +49-89-6096345

energy.te.com



WOKING
Unit 19, Woking Business Park
Albert Drive, Woking GU21 5JY
Tel: 01483 747747 • Fax: 01483 747001

BRISTOL
The Alpha Centre, Armstrong Way,
Great Western Business Park, Yate, Bristol BS37 5NG
Tel: 01454 322555 • Fax: 01454 323555

NORTON CANES
Unit 15-16, Bellsize Close, Norton Canes,
Staffordshire WS11 9TQ
Tel: 01543 450555 • Fax: 01543 450600