



Energy Division

Lugs for sector shaped solid aluminium conductors

LVET aluminium alloy lugs are designed primarily for solid sector shaped aluminium conductors (either 120° or 90° angle) of three or four core cables. Unlike fittings made from pressed or forged tube, the blocked barrel of these fittings prevents water passing through the palm to the barrel.

They are available in two types:

- Palm with M12 clearance hole
- Palm with M16 clearance hole

Part No: - LVETxxx-zz

-xxx: Max. Conductor size for connector body : 120, 185 or 300mm²

-zz: Palm description :
 -12 is palm with M12 hole
 -16 is palm with M16 hole

Features

- Solid moisture block between palm and barrel
- Low torque direct-acting shear-head bolts
- Smooth profile prevents damage to insulation or sealing sleeves

Standard

- Tested to BS4579 and ER C79

Reference	PN	TCPN	Conductor size (mm ²)
LVET12012(SECT)/AG2M12	BAH-024020028	016338-000	120
LVET12012(SECT)/AG3M12	BAH-024020029	278176-000	70 - 95
LVET12016(SECT)/AG2M12	BAH-024020034	335152-000	120
LVET12016(SECT)/AG3M12	BAH-024020035	531714-000	70 - 95
LVET18512(SECT)/AG1M18	BAH-024020039	136892-000	150 - 185
LVET18516(SECT)/AG1M18	BAH-024020044	204094-000	150 - 185
LVET30012/AG1M18	BAH-024020046	723430-000	240 - 300
LVET30016/AG1M18	BAH-024020048	390474-000	240 - 300

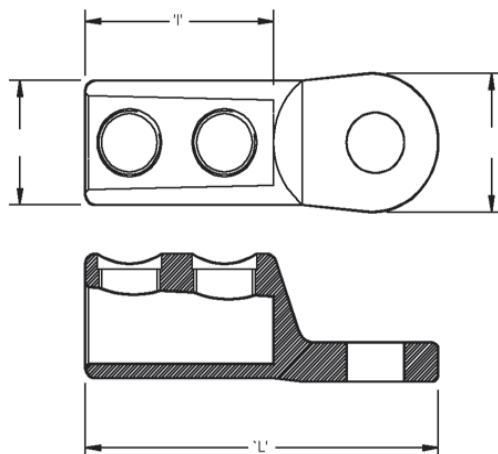
DATA SHEET Number: EPP-1725	Date: 01/11/2009 Revision: A
--------------------------------	---------------------------------

 **Tyco Electronics**
 Our commitment. Your advantage.

WOKING
 Unit 19, Woking Business Park
 Albert Drive, Woking GU21 5JY
 Tel: 01483 747747 • Fax: 01483 747001

BRISTOL
 The Alpha Centre, Armstrong Way,
 Great Western Business Park, Yate, Bristol BS37 5NG
 Tel: 01454 322555 • Fax: 01454 323555

NORTON CANES
 Unit 15-16, Bellsizes Close, Norton Canes,
 Staffordshire WS11 9TQ
 Tel: 01543 450555 • Fax: 01543 450600



Reference	PN	L	I	ØD	W	A/F
LVET12012(SECT)/AG2M12	BAH-024020028	86	40	28	32	13
LVET12012(SECT)/AG3M12	BAH-024020029	86	40	28	32	13
LVET12016(SECT)/AG2M12	BAH-024020034	86	40	28	32	13
LVET12016(SECT)/AG3M12	BAH-024020035	86	40	28	32	13
LVET18512(SECT)/AG1M18	BAH-024020039	104	56	35	39	19
LVET18516(SECT)/AG1M18	BAH-024020044	104	56	35	39	19
LVET30012/AG1M18	BAH-024020046	116	56	41	43	19
LVET30016/AG1M18	BAH-024020048	116	56	41	43	19

While Tyco Electronics and its affiliates referenced herein have made every reasonable effort to ensure the accuracy of the information contained in this catalogue, Tyco Electronics cannot assure that this information is error free. For this reason, Tyco Electronics does not make any representation or offer any guarantee that such information is accurate, correct, reliable or current. Tyco Electronics reserves the right to make any adjustments to the information at any time. Tyco Electronics expressly disclaims any implied warranty regarding the information contained herein, including, but not limited to, the implied warranties of merchantability or fitness for a particular purpose. Tyco Electronics' only obligations are those stated in Tyco Electronics' Standard Terms and Conditions of Sale. Tyco Electronics will in no case be liable for any incidental, indirect or consequential damages arising from or in connection with, including, but not limited to, the sale, resale, use or misuse of its products. Users should rely on their own judgement to evaluate the suitability of a product for a certain purpose and test each product for its intended application. TE (logo) and Tyco Electronics are trademarks of the Tyco Electronics group of companies and its licensors.

Energy Division - economical solutions for the electrical power industry: cable accessories, connectors & fittings, electrical equipment, instruments, lighting controls, insulators & insulation enhancement and surge arresters.

Tyco Electronics UK Ltd

Energy Division
Freebournes Road
Witham, Essex CM8 3AH

Phone: +44 (0)870 870 7500
Fax: +44 (0)870 240 5289
Email: ukutilities@tycoelectronics.com

<http://energy.tycoelectronics.com>



Tyco Electronics
Our commitment. Your advantage.

WOKING

Unit 19, Woking Business Park
Albert Drive, Woking GU21 5JY
Tel: 01483 747747 • Fax: 01483 747001

BRISTOL

The Alpha Centre, Armstrong Way,
Great Western Business Park, Yate, Bristol BS37 5NG
Tel: 01454 322555 • Fax: 01454 323555

NORTON CANES

Unit 15-16, Bellsizes Close, Norton Canes,
Staffordshire WS11 9TQ
Tel: 01543 450555 • Fax: 01543 450600