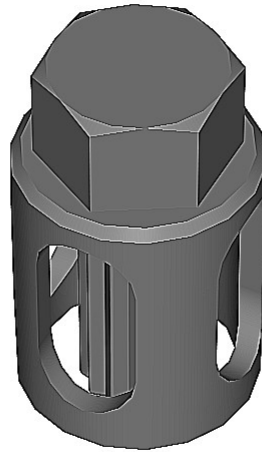


**'JTS/16' Universal Screw Socket (17mm A/F)**  
(53485-87)**Material:** Steel Casting**Length:** 40mm

The **JTS/16 Universal Screw Socket** has been designed to be used with the SED patented M16 & M18 universal multi shear screws, the tool ensures that the screw will always shear flush with the connector body.

The **JTS/16 Socket** has been designed for use within a standard 17mm A/F socket.

**Operating Instructions:**

1. It is vitally important that the 'JTS/16' socket collar remains in contact with the connector body at all times.
2. Using the JTS/16 socket torque tighten the shear screws at approximately 1 revolutions at a time, until all the screws have sheared.



