

384 Series

Heavy Duty Hook Cleat

25-80mm Diameter



BIcon™

Application

Standard and LSOH Cables - 25 to 80 mm diameter.
 For normal industrial use Indoor and Outdoor.
 Fits most ladder and tray systems.
 Operating temperature -20°C to +90°C.
 Can be double stacked on one fixing.
 Not designed to secure cables in long vertical routes.
 All sizes secured with 10mm fixings.

Features

Manufactured from glass-filled nylon & LSOH Materials.
 Two-piece, single fixing design.
 Can be installed in temporary open position to aid single person working.
 Tested in accordance with BS EN 50368



Heavy Duty Hook Cleat

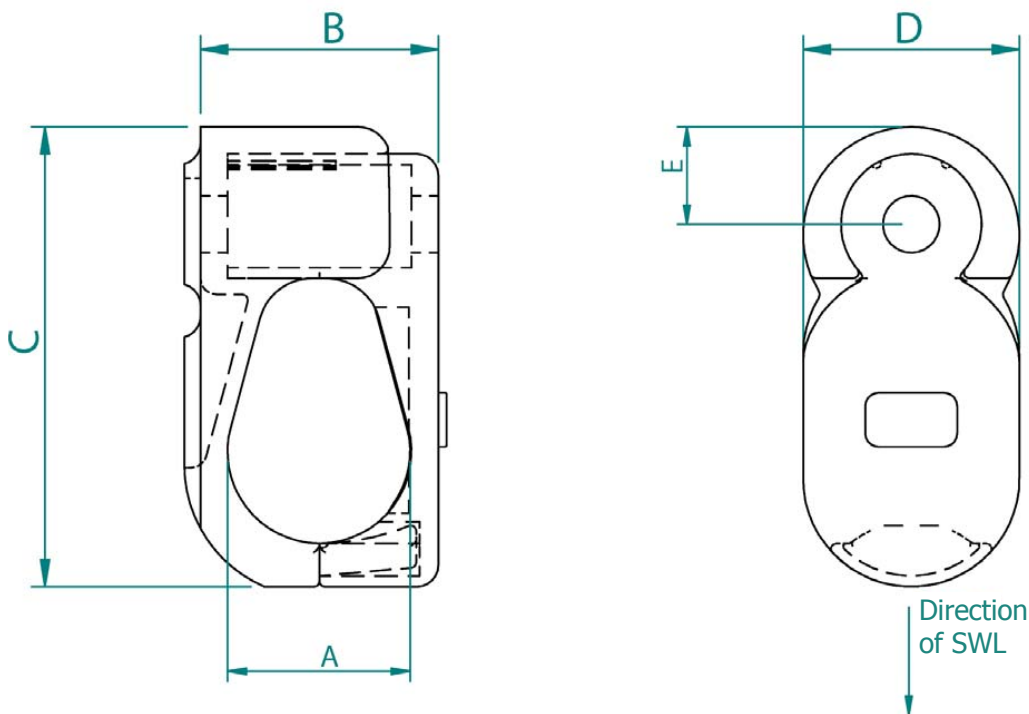
Cable Clear Selection				Cleat Details									
Design Number		Cable Diameter		Dimensions (mm)					Weight		SWL (FOS 2)		
Nylon	LSOH	A (mm)		B	C	D	E	Nylon	LSOH	Nylon	LSOH		
		Min	Max	Min	Max			g	g	kgf	kgf		
384AA01	384LSF01	25	35	36	46	76	40	18	63	52	80	48	
384AA02	384LSF02	34	44	44	54	85	40	18	74	61	80	48	
384AA03	384LSF03	43	53	56.5	66.5	96	40	18	105	88	98	59	
384AA04	384LSF04	52	62	65.5	75.5	106	40	18	129	108	103	62	
384AA05	384LSF05	61	71	78	88	119	44	20	175	146	165	99	
384AA06	384LSF06	70	80	87	97	129	44	20	221	185	171	103	

Method of Fixing

In all applications the cleat should be mounted on suitable M10 fixings. There is no need for any channel adaptor when mounting directly on to 'C' section channel.

SWL = Safe Working Load

FOS 2 = Values include a Factor of Safety of 2



Prysmian Cables & Systems Limited, Components Unit, Oak Road, Wrexham Industrial Estate, Wrexham, L13 9PH
 Commercial Enquiries, Tel +44 (0) 845 767 8345, Fax +44 (0) 1978 662 410
 components.sales@prysmian.com

Ref: HeavyDutyHookCleat/01/11

www.prysmian.co.uk



WOKING

Unit 19, Woking Business Park, Albert Drive,
 Woking GU21 5JY
 Tel: 01483 747747 • Fax: 01483 747001

BRISTOL

The Alpha Centre, Armstrong Way, Great Western
 Business Park, Yate, Bristol BS37 5NG
 Tel: 01454 322555 • Fax: 01454 323555

NORTON CANES

Unit 15-16, Bellsizes Close, Norton Canes,
 Staffordshire WS11 9TQ
 Tel: 01543 450555 • Fax: 01543 450600

www.jointingtech.co.uk