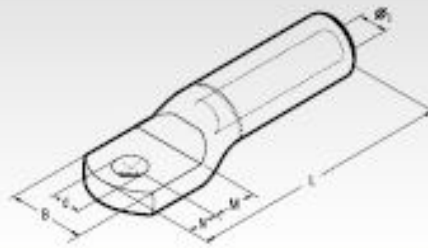


# AA-M

# ALUMINIUM TERMINALS



AA-M series terminals are made from Aluminium of a purity equal to or greater than 99,5%.

They are designed to accept a variety of conductor forms especially low stranded compacted conductors.

Non circular conductors may require pre-rounding prior to introduction to the terminal.

Barrels are capped and filled with grease so as to avoid oxidation of the Aluminium.

Details of the appropriate crimping tools and dies are shown on page 217.

Conductor Size sqmm	Ø Stud mm	Type	Dimensions mm						Quantity Box/Bag	Hydraulic Tools
			B1	B	M	N	L	d		
16	8	AA16-M8	5,5	21	13	11	77,0	8,4	60/3	HT130-UC RHU31-C B1300-UC
25	8	AA25-M8	6,5	21	13	11	77,0	8,4	60/3	
35	8	AA35-M8	8,0	23	13	11	77,5	8,4	60/3	
	10	AA35-M10	8,0	23	13	11	77,5	10,5	60/3	
50	12	AA50-M12	9,0	26	16	14	91,0	13,2	60/3	
	14	AA50-M14	9,0	26	18	16	95,0	15,0	60/3	
70	12	AA70-M12	11,0	27	16	14	91,0	13,2	45/3	
	14	AA70-M14	11,0	27	18	16	95,0	15,0	45/3	
95	12	AA95-M12	12,5	27	16	14	91,0	13,2	45/3	
	14	AA95-M14	12,5	27	18	16	95,0	15,0	45/3	
120	12	AA120-M12	13,7	35	16	14	115,0	13,2	30/3	
	14	AA120-M14	13,7	35	18	16	119,0	15,0	30/3	
150	12	AA150-M12	15,5	34	16	14	115,0	13,2	30/3	
	14	AA150-M14	15,5	34	18	16	119,0	15,0	30/3	
185	12	AA185-M12	17,0	42	20	14	122,0	13,2	18/3	
	14	AA185-M14	17,0	42	22	16	126,0	15,0	18/3	
240	12	AA240-M12	19,5	44	20	14	122,0	13,2	15/3	
	14	AA240-M14	19,5	44	22	16	126,0	15,0	15/3	
300	12	AA300-34M12	22,5	47	22	14	130,0	13,2	15/3	
	14	AA300-34M14	22,5	47	22	16	132,0	15,0	15/3	
	16	AA300-34M16	22,5	47	22	17	133,0	17,0	15/3	
	16	AA300-M16	23,3	54	22	19	177,0	17,0	12/3	HT130 HT131-C RHU31 ECW-HBD RHU 210-6-30
400	16	AA400-M16	26,0	56	19	17	172,0	17,0	15/3	
500	16	AA500-40M16	29,1	57	22	19	177,0	17,0	12/3	
630	16	AA630-M16	32,5	70	22	19	177,0	17,0	9/3	