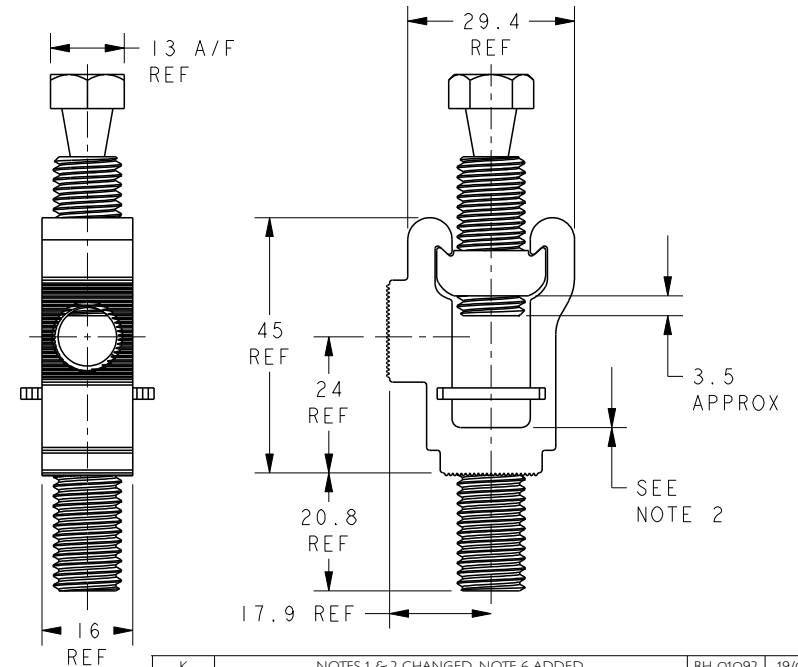
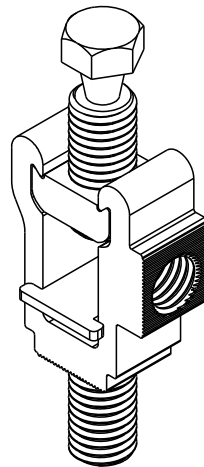


SEE NOTE 1 ↔



NOTES :

1. USING HAND, SCREW STUD INTO CNE BODY, ENSURING KNURLED END OF STUD GOES INTO BODY.
2. WHEN STUD IS FITTED, IT'S TOP SURFACE MUST BE SUB-FLUSH TO FACE INDICATED.
3. COMPONENT TO BE ASSEMBLED AS SHOWN WITH SHEAR BOLT SCREWED THROUGH SHOE BY 2 COMPLETE TURNS (3.5mm APPROX).
4. CONNECTOR BODY / STUD & PRESSURE PLATE SUPPLIED LOOSE.
5. APPROX PART WEIGHT = 144.38g
6. APPLY ONE DROP OF LOCTITE 2700 TO THREAD ON BOTTOM OF BRASS CNE BODY AS PER STANDARD WORK.



Material	VARIES
Finish	VARIES
Tolerances (UOS)	N/A
B&H Short Desc.	BTCNE1S/BSM12/SL30

- IF IN DOUBT ASK - DO NOT SCALE -
Part Description
**BRASS CNE END TERMINATION - TYPE 1
WITH M12 BOTTOM & SIDE HOLES,
SINGLE-SHEAR BOLT & STUD**

REMOVE ALL BURRS AND SHARP EDGES - SURFACES TO BE FREE FROM SCRATCHES AND DEFECTS - ALL THREADS TO BS3643 PT 2

K	NOTES 1 & 2 CHANGED, NOTE 6 ADDED.	BH-01092	19/05/15
J	PICTORIAL CHANGES TO BAH-015000017 - SERRATIONS ADDED	BH-00873	05/04/13
H	BAH-015000084 (x1) & BAH-025000093 (x1) REMOVED AND REPLACED WITH BAH-015000013 (x1), BAH-015000014 (x1), BAH-015000017 (x1) & BAH-017000038 (x1)	BH-00842	06/12/12
G	WIDTH 27.8 REF WAS SHOWN INCORRECTLY AS 32.3 REF	BH-00795	12/04/12
F	BAH-015000013 (x1), BAH-015000014 (x1), BAH-015000017 (x1) & BAH-017000038 (x1) REMOVED AND REPLACED WITH BAH-015000084 (x1) & BAH-025000093 (x1)	BH-00746	06/03/12
E	ASSEMBLY NOTES 3 & 4 ADDED	BH-00182	27/11/06
D	NOTES 1 & 2 ADDED	D M E	14/10/04
C	'ITEM 5' WAS 01-704-0002	D M E	28/09/04
B	PART No WAS BTCNE1S/BSM12/SL30, DRG No WAS 1022-A01	S.P.W	19.11.01
A	FIRST ISSUE	ET	04.10.95
Revision	Description	Name/DMR	Date

Design/Drawn	S.P.WEST	Date	19-Nov-01	Scale (UOS)	3:4	THIRD ANGLE PROJECTION	A4
TCPN	227098-000	Part Weight					
Drawing/Part No.	BAH-0250000024	Drawing Type	CUSTOMER	Rev	K		

© 2014 TYCO ELECTRONICS UK LTD, WITHAM, UK