

Tool & Die Selector Chart



TOOLING

This range of BICON compression tools represents the combination of many years of experience in design, manufacture and operation of this type of equipment. The tools are designed to provide the correct crimping force to ensure both electrical and mechanical reliability for the BICON Compression Connector Range.

TOOLING SELECTOR CHART

Cable cross section mm ²	G10TS	E10HB	G14H		E22H	
	Dies	Dies	Dies	Adaptors	Dies	Adaptors
10	U10CHEX	U10CHEX	U10CHEX	PUADP	-	-
16	U16CHEX	U16CHEX	U16CHEX	PUADP	-	-
25	U25CHEX	U25CHEX	U25CHEX	PUADP	-	-
35	U35CHEX	U35CHEX	U35CHEX	PUADP	-	-
50	U50CHEX	U50CHEX	U50CHEX	PUADP	-	-
70	U70CHEX	U70CHEX	U70CHEX	PUADP	-	-
95	U95CHEX	U95CHEX	U95CHEX	PUADP	-	-
120	U120CHEX	U120CHEX	U120CHEX	PUADP	-	-
150	U150CHEX	U150CHEX	U150CHEX	PUADP	-	-
185	U185CHEX	U185CHEX	U185CHEX	PUADP	-	-
240	U240CHEX	U240CHEX	U240CHEX	PUADP	-	-
300	U300CHEX	U300CHEX	U300CHEX	PUADP	-	-
400	U400CHEX	U400CHEX	U400CHEX	PUADP	-	-
500	-	-	-	-	EDNX500c + EDP240-500c	ED22AD1
630	-	-	-	-	EDNX630c + EDP630c	ED22AD2
800	-	-	-	-	EDN800c + EDP800-1000c	ED22AD2
1000	-	-	-	-	EDN1000C + EDP800-1000c	ED22AD2

Make the right connection...



SPECIALIST DISTRIBUTORS OF



ETECH COMPONENTS • UNIT 4 • CARRAWAY ROAD • GILLMOSS INDUSTRIAL ESTATE • LIVERPOOL • UK • L11 0EE
TEL: +44 (0)151 547 2666 • FAX: +44 (0)151 547 1444 • EMAIL: SALES@BICON-UK.COM • WWW.BICON-UK.COM

G10TS Hydraulic Handtool



G10TS HYDRAULIC HANDTOOL Range (10 - 400mm²)



- Two stage hydraulic tool
- Delivers compressive force of 11.5 tonnes with a quick ram advance
- Incorporates a preset audible overload valve to ensure crimp reliability
- Accept a wide range of interchangeable die sets (U type)
- Body and handle fully insulated
- Supplied complete with vinyl carrying bag and steel die box
- Installs lugs up to 400mm² and splices up to 300mm²

G10 TYPE HYDRAULIC HANDTOOL DIES



- Wide range of hexagon, indent and circumferential die sets
- The U - PO pre-rounding dies enable sector shaped stranded conductors to be formed before fitting circular shaped connectors

Description	Ref. No.
Nest die (SAC)	UNA -
Nest die (Copper)	UNX-C
Indenter die (SAC)	UP-A
Indenter die (Copper)	UP-C
Hexagonal die set (Aluminium)	U-
Hexagonal die set (Copper)	U-CHEX
Circumferential die set (Aluminium)	U-ART
Circumferential die set for MV die (Copper)	U-H
Pre- rounding die set	U-PO
Pre- rounding die set	U-PR
Deep indent die set (Aluminium)	U-D1

Make the right connection...



SPECIALIST DISTRIBUTORS OF



ETECH COMPONENTS • UNIT 4 • CARRAWAY ROAD • GILLMOSS INDUSTRIAL ESTATE • LIVERPOOL • UK • L11 0EE
TEL: +44 (0)151 547 2666 • FAX: +44 (0)151 547 1444 • EMAIL: SALES@BICON-UK.COM • WWW.BICON-UK.COM

FP10 Hydraulic Footpump



FP10 HYDRAULIC FOOTPUMP



- Two stage hydraulic footpump
- Can be used to operate any of the Prysmian heads, with an operating pressure of 700 Bar (10,000psi)
- Two stage design enables the dies to close quickly on to the connector before the high pressure crimping stage automatically commences
- Audible overload valve operates at the end of the crimping cycle when the correct pressure has been reached
- The FP10 can be supplied on its own or in the kit forms as below:

Description	Ref. No.
Footpump, hose and case	FP10 - 2
Footpump, hose, case and G10H head	FP10 - 4

FP10 HYDRAULIC FOOTPUMP - HEADS AND DIES



E10H COMPRESSION HEAD AND DIES

- Latch top of this head makes it particularly suitable for crimping uninsulated splices in jointing applications
- Please see separate datasheet "E10H Compression Head" for further details on this product



E10C CUTTER HEAD

- To cut aluminium or copper cables up to 100mm in diameter not exceeding 1200mm²
- Please see separate datasheet "E10C Cutter Head" for further details on this product



G14H COMPRESSION HEAD AND DIES

- 'G' shaped compression head delivers a compressive force of 14 tonnes.
- Please see separate datasheet "G14H Compression Head" for further details on this product



E22H COMPRESSION HEAD AND DIES

- Latch top of this compression head can be pivoted open to allow positioning around the conductor
- Please see separate datasheet "E22H Compression Head" for further details on this product

Make the right connection...



SPECIALIST DISTRIBUTORS OF



ETECH COMPONENTS • UNIT 4 • CARRAWAY ROAD • GILLMOSS INDUSTRIAL ESTATE • LIVERPOOL • UK • L11 0EE
TEL: +44 (0)151 547 2666 • FAX: +44 (0)151 547 1444 • EMAIL: SALES@BICON-UK.COM • WWW.BICON-UK.COM

E10H Compression Head



E10H COMPRESSION HEAD (RANGE 10 - 400mm²)



- For use with FP10 hydraulic footpump
- Latch top of this head makes it particularly suitable for crimping uninsulated splices in jointing applications
- Delivers a crimping force of 11.5 tonnes
- Accepts the same range of U type dies as the G10 tools (see below)
- Installs lugs and splices up to 400mm²

E10H HYDRAULIC TOOL DIES



- Wide range of hexagon, indent and circumferential die sets
- The U - PO pre-rounding dies enable sector shaped stranded conductors to be formed before fitting circular shaped connectors

Description	Ref. No.
Nest die (SAC)	UNA -
Nest die (Copper)	UNX-C
Indentor die (SAC)	UP-A
Indentor die (Copper)	UP-C
Hexagonal die set (Aluminium)	U-
Hexagonal die set (Copper)	U-CHEX
Circumferential die set (Aluminium)	U-ART
Circumferential die set for MV die (Copper)	U-H
Pre- rounding die set	U-PO
Pre- rounding die set	U-PR
Deep indent die set (Aluminium)	U-D1

Make the right connection...



SPECIALIST DISTRIBUTORS OF



ETECH COMPONENTS • UNIT 4 • CARRAWAY ROAD • GILLMOSS INDUSTRIAL ESTATE • LIVERPOOL • UK • L11 0EE
TEL: +44 (0)151 547 2666 • FAX: +44 (0)151 547 1444 • EMAIL: SALES@BICON-UK.COM • WWW.BICON-UK.COM

E22H Compression Head



E22H COMPRESSION HEAD (RANGE 150 - 1000mm²)



- For use with FP10 hydraulic footpump (please see separate datasheet for further information on this product)
- Latch top of this compression head can be pivoted open to allow positioning around the conductor
- Delivers a compressive force of 22 tonnes
- Will install copper connectors up to 1000mm²
- Will install aluminium connectors up to 960mm²

E22H HYDRAULIC TOOL DIES



- Hexagon and indent dies to fit the E22H head
- The ED22AD- adaptor die must be used to hold the EDP-C indenter in position in the crimping head

Description	Ref. No.
Nest die (Copper)	EDNX-C
Indentor die (Copper)	EDP-C
Hexagonal die (Aluminium)	ED-
Adaptor die (Copper)	ED22AD

Make the right connection...



SPECIALIST DISTRIBUTORS OF



ETECH COMPONENTS • UNIT 4 • CARRAWAY ROAD • GILLMOSS INDUSTRIAL ESTATE • LIVERPOOL • UK • L11 0EE
TEL: +44 (0)151 547 2666 • FAX: +44 (0)151 547 1444 • EMAIL: SALES@BICON-UK.COM • WWW.BICON-UK.COM

G14H Compression Head

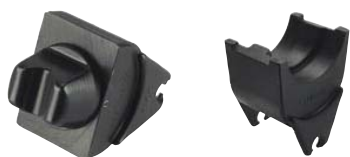


G14H COMPRESSION HEAD (RANGE 10 - 630mm²)



- For use with FP10 hydraulic footpump
- 'G' shaped compression head delivers a compressive force of 14 tonnes.
- Can crimp copper connectors up to 630mm²
- Can crimp aluminium connectors up to 400mm²
- Full range of U type dies can be employed when used with a PUADP adaptor

G14H HYDRAULIC TOOL DIES



- Indent and circumferential dies to fit the G14H head
- The PUADP adaptor enables the U type dies to be used in the G14H tool



Description	Ref. No.
Nest die (Copper)	PN-C
Indenter die (Copper)	PP-C
Adaptor die (Copper / Aluminium)	PUADP
Circumferential die set (Copper)	P-H
Circumferential die set (Copper / Aluminium)	P-ART

Make the right connection...



SPECIALIST DISTRIBUTORS OF



ETECH COMPONENTS • UNIT 4 • CARRAWAY ROAD • GILLMOSS INDUSTRIAL ESTATE • LIVERPOOL • UK • L11 0EE
TEL: +44 (0)151 547 2666 • FAX: +44 (0)151 547 1444 • EMAIL: SALES@BICON-UK.COM • WWW.BICON-UK.COM

E10C Cutter Head



E10C CUTTER HEAD (RANGE 0 - 100mm DIAMETER)



- This cutter head can be used with any BICON hydraulic pump to cut aluminium or copper cables up to 100mm in diameter and cross section areas not exceeding 1200mm²
- Weight 13.3Kg.
- Size: L = 570mm
H = 250mm
W = 78mm
- Replacement blades available on request.

Make the right connection...



SPECIALIST DISTRIBUTORS OF



ETECH COMPONENTS • UNIT 4 • CARRAWAY ROAD • GILLMOSS INDUSTRIAL ESTATE • LIVERPOOL • UK • L11 0EE
TEL: +44 (0)151 547 2666 • FAX: +44 (0)151 547 1444 • EMAIL: SALES@BICON-UK.COM • WWW.BICON-UK.COM