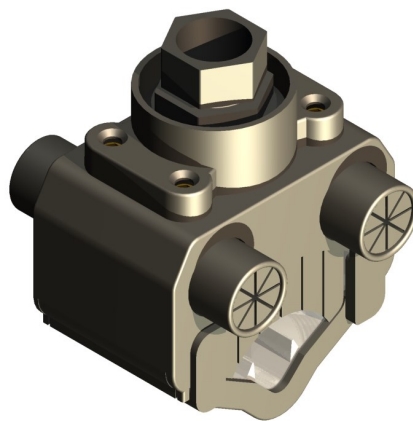


‘JTN/9 Insulated Holding Tool*(53485-43)***Material:** Polyamide 6 (15% Glass Filled)**Length:** 190mm

The ‘JTN/9’ **Insulated Holding Tool** has been designed as an aid for the jointing of the ‘NMS’ range of insulated mains service connectors (see below).

The ‘JTN/9’ tool locates on top of the connector assembly during the torque tightening process to minimise any possible core twisting/mis-alignment.

**NMS185/35 & NMS300/35***(51801-36)**(51801-96)*

