

Claw Cleat (Aluminium)

370 Series



The Aluminium Claw Cleat is an LUL approved cable which is the superior choice for industrial or outdoor areas.

Features and Benefits

- Suitable for use with cable diameters 10 to 51mm.
- Manufactured from aluminium alloy.
- Two-piece, single fixing design.
- Can be stacked to a maximum of three on one fixing.
- Operating temperature -60°C to +105°C.
- Can be used for all types of cable routes.
- Plain finish - for normal industrial areas or outdoor unpolluted areas.
- Epoxy coated versions available for harsher environments.
- Packing pieces to be used where required.
- LUL APR Product ID 1959.



Performance Data

| Test Standard | EN 50368:2003 |
|-------------------|-------------------|
| Type | 6.1.1 Metallic |
| Impact Resistance | 6.2.5 V. Heavy |
| Lateral Load | 3.7 -> 8.2 kN |
| Axial Load | 1.332 -> 5.855 kN |
| Needle Flame | >120 secs |

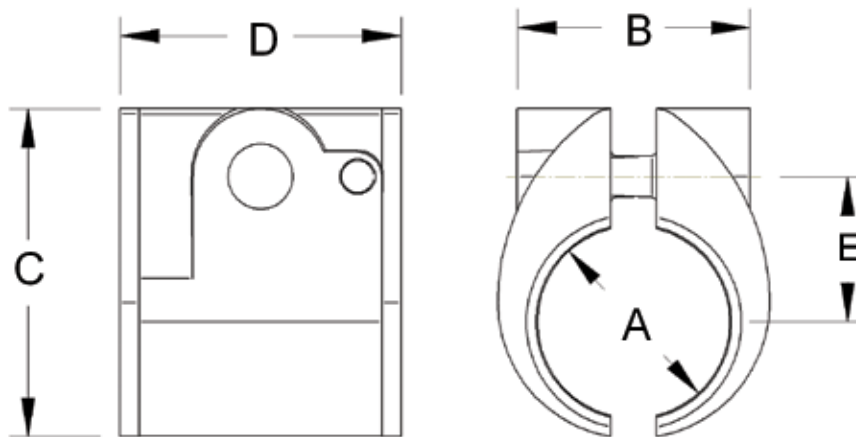
Technical Data

| Cable and Cleat Selection | | | | Cleat Details | | | | | |
|---------------------------|--------------|----------------|-----|-----------------|----|----|----|------------|-----------|
| Design Number | | Cable diameter | | Dimensions (mm) | | | | Weight (g) | Stud Size |
| Standard | Epoxy Coated | A (mm) | | B | C | D | E | | |
| | | Min | Max | | | | | | |
| 370BA01 | 370BB01 | 10 | 13 | 21 | 38 | 46 | 16 | 60 | M10 |
| 370BA02 | 370BB02 | 13 | 16 | 21 | 38 | 46 | 16 | 50 | M10 |
| 370BA03 | 370BB03 | 16 | 19 | 24 | 41 | 46 | 18 | 60 | M10 |
| 370BA04 | 370BB04 | 19 | 22 | 27 | 44 | 46 | 19 | 70 | M10 |
| 370BA05 | 370BB05 | 22 | 25 | 30 | 48 | 46 | 21 | 80 | M10 |
| 370BA06 | 370BB06 | 25 | 32 | 37 | 54 | 46 | 24 | 90 | M10 |
| 370BA07 | 370BB07 | 32 | 38 | 43 | 60 | 46 | 27 | 110 | M10 |
| 370BA08 | 370BB08 | 38 | 44 | 49 | 67 | 46 | 30 | 120 | M10 |
| 370BA09 | 370BB09 | 44 | 51 | 56 | 73 | 46 | 34 | 150 | M10 |

* Technical information subject to change without notice

Method of Fixing

In all applications the cleats should be mounted on suitable M10 fixings. When mounting directly on channel, adaptor plate 380AC02 should be used. When stacking claw cleats use packing piece 389AC03 between cleats. (Please see page 38 for selecting both of these items.)



Prysmian Cables & Systems Limited,
Oak Road, Wrexham Industrial Estate, Wrexham, LL13 9PH, UK

Commercial Enquiries,
Sales Office Tel: 0845 767 8345,
International Sales Office Tel: +44 2380 295481

www.biconcomponents.co.uk