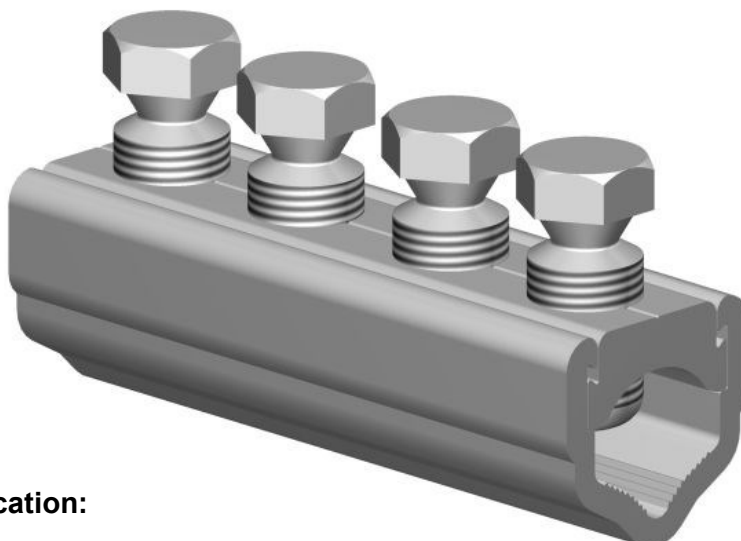


Straight-through mains
connectors

MECHANICAL CONNECTORS

UM95, UM95XL, UM185, UM185XL, UM300 & UM300XL Connectors



Principle Application:

For LV straight jointing of sector/round, stranded/solid, aluminium/copper conductor cores.

Range:

Connector Reference (Part Number)	Core c.s.a. mm ² (In ²)	
	Min	Max
UM95 (51803-01)	25 (0.04)	95 (0.15)
UM95XL (51801-58)		
UM185 (51801-97)	35 (0.06)	185 (0.3)
UM185XL (51803-55)		
UM300 (51801-12)	70 (0.1)	300 (0.5)
UM300XL (51803-67)		

Note: For jointing other core configurations/sizes please contact Sicame Engineering Dept

The **Sicame UMxxx / UMxxxXL** range of straight through mains connectors accommodates an extensive range of LV cable styles and sizes.

The connector utilises the proven shear head, direct acting bolts (plated) thereby removing the need for pressure plates.

The plated bolts, combined with a standard plated yoke section, allow for the jointing of copper conductor cores without the need for conventional brass gauze.

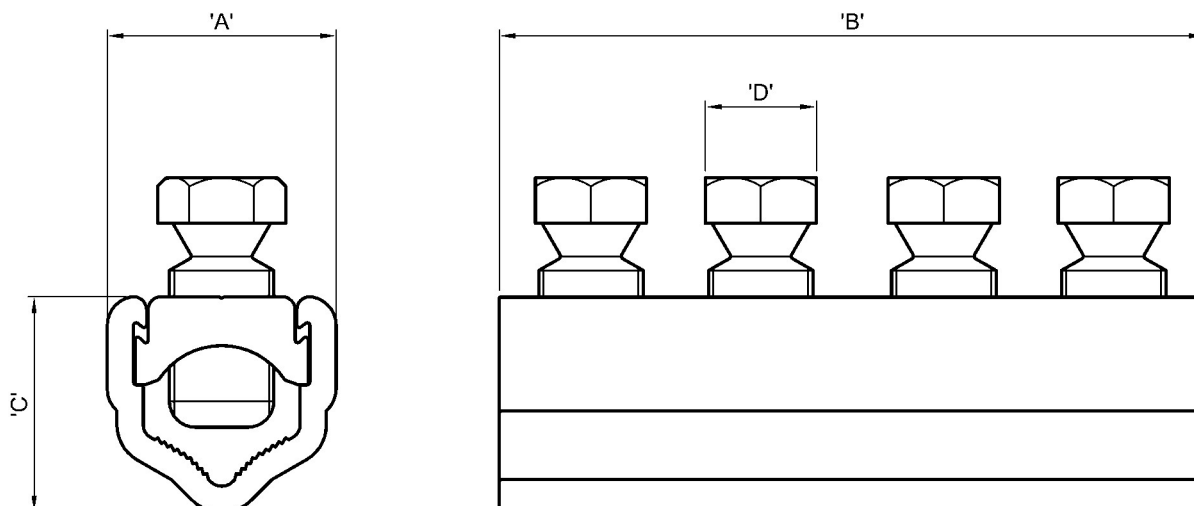
Note: For the jointing of CNE strands add the suffix 'N' to the end of the product code, pressure pads will then be included.

Straight-through mains
connectors

MECHANICAL CONNECTORS

UM95, UM95XL, UM185, UM185XL, UM300 & UM300XL Connectors

Physical Dimensions



Connector Reference (Part Number)	Dimensions (mm)			
	'A'	'B'	'C'	'D'
UM95 (51803-01)	26.0	86.0	24.5	13 A/F
UM95XL (51801-58)	26.0	106.0	24.5	13 A/F
UM185 (51801-97)	35.0	108.0	33.0	17 A/F
UM185XL (51803-55)	35.0	128.0	33.0	17 A/F
UM300 (51801-12)	41.0	120.0	40.0	17 A/F
UM300XL (51803-67)	41.0	140.0	40.0	17 A/F

Material:

Aluminium Alloy

Test Specification:

Designed to meet the requirements of Engineering Recommendation C79 and IEC 1238-1.